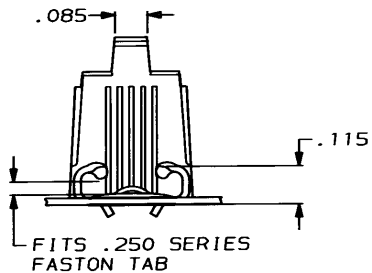
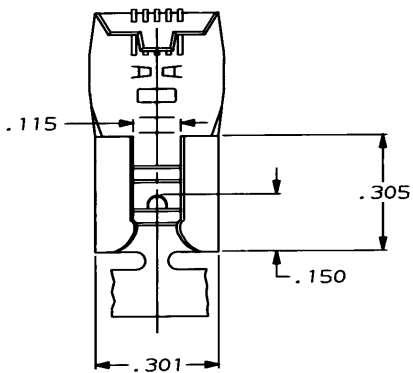


DRAWING MADE IN THIRD ANGLE PROJECTION

THIS DRAWING IS UNPUBLISHED. RELEASED FOR PUBLICATION  
 © COPYRIGHT 1971 BY AMP INCORPORATED, HARRISBURG, PA. ALL INTERNATIONAL RIGHTS RESERVED. AMP PRODUCTS MAY BE COVERED BY U.S. AND FOREIGN PATENTS AND/OR PATENTS PENDING.

LOC	DIST	REVISIONS				DATE	APPROVED
AF	50	P	F	ZONE	LTR		
					H	REVISED	AF-7659
						02/17/91	JR/CM



1- CONTINUOUS STRIP ON REELS.

WIRE SIZE	TAB THK	FINISH	MATERIAL	PART NO
12-10 OR (2) #14	.032 ±.001	PRE-TIN	.016 4M BRASS	62011-2
12-10 OR (2) #14	.032 ±.001	---	.016 4M BRASS	62011-1

UNLESS OTHERWISE SPECIFIED DIMENSIONS ARE IN INCHES TOLERANCES ON: 2 PL DEC ± 3 PL DEC ± .015 ANGLES ±	DR 2/3/86 JR RUTH CHK 2/3/86 MS FEHER APPD 2/5/86 C MEYERS R KUZO	NAME <b>AMP</b>   AMP INCORPORATED Harrisburg, Pa. 17105 RECEPTACLE, FASTON, FLAG, .250 SERIES
MATERIAL SEE TABLE	APPD 2/5/86 R KUZO PRODUCT SPEC	SIZE <b>B</b>
FINISH SEE TABLE	APPLICATION SPEC	FSCM NO 00779
	WEIGHT	DRAWING NO 62011
		SCALE NTS
		SHEET 1 OF 1

CUSTOMER DRAWING

AMP 1470-15 REV 10-84

17 OCT 1988 10 30 30 AM 1470-15 REV 10-84