

4

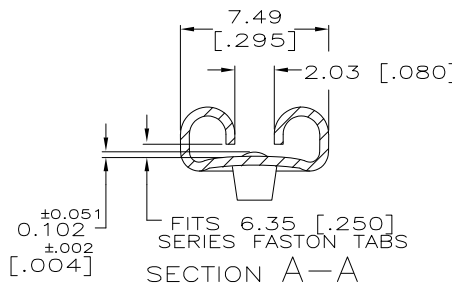
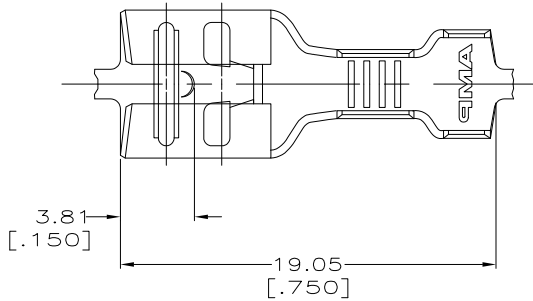
3

2

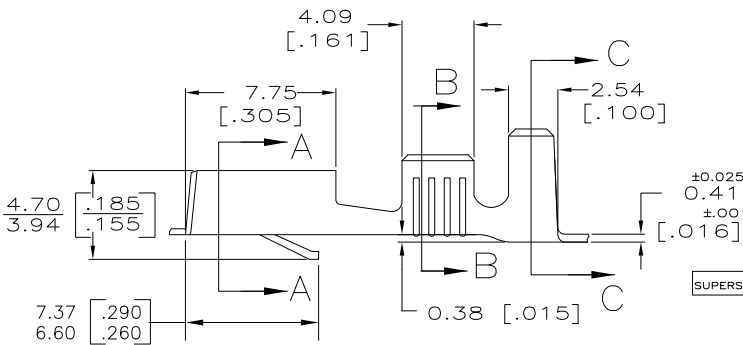
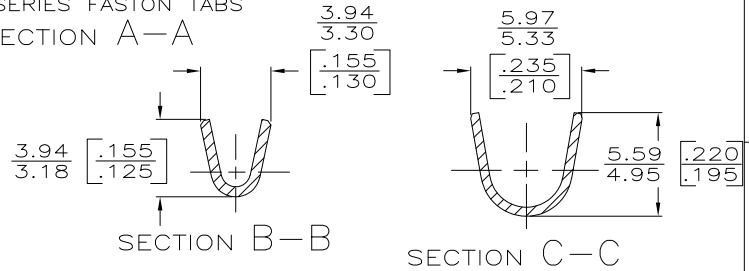
1

THIS DRAWING IS UNPUBLISHED. RELEASED FOR PUBLICATION
 © COPYRIGHT - By - ALL RIGHTS RESERVED.

| | | | | | | | |
|-----|------|-----------|-----|---------------------------|---------|-----|------|
| LOC | DIST | REVISIONS | | | | | |
| AF | 50 | P | LTR | DESCRIPTION | DATE | DWN | APVD |
| | | AM3 | | REVISED PER ECO-11-004587 | 11MAR11 | RK | HMR |



- 1 CONTINUOUS STRIP ON REELS.
- 2 PREPRODUCTION - FASR REQ.
- 3 MATING TAB THK TO BE 0.81±0.025 [.032±.001].
- 4 REDUCED PACKAGE QUANTITY
- 5 PRELIMINARY - NOT FOR PRODUCTION
- 6 OBSOLETE PARTS: OBSOLETE CIS STREAMLINING PER D.RENAUD/D.SINISI



| | | | | | |
|------------------|----------------------------|-----------------------------------|--------|--------------|----------|
| SUPERSEDED | 2.54 - 4.32 [.100-.170] | 0.8-2.0mm ² [18-14] | TIN | H04 BRASS | 42281-8 |
| | | | TIN | H03 PHOS BRZ | 42281-7 |
| | | | SILVER | H03 PHOS BRZ | 42281-6 |
| | | | SILVER | H03 PHOS BRZ | 42281-5 |
| | | | TIN | H04 BRASS | 42281-3 |
| | | | - | H04 BRASS | 42281-1 |
| INSULATION RANGE | | | FINISH | MATERIAL | PART NO. |

| | | | | | | | | | | |
|--------------------|----------------|------------------|-------------------|----------------|-----------------|----------------|----------------|------|------|------|
| O | 4.57 [.180] | 5.59 [.220] | F | 2.79 [.110] | 1.40 [.055] | 1.55 [.061] | 1.78 [.070] | #18 | #16 | #14 |
| TYPE | WIDTH | LENGTH | TYPE | WIDTH | HEIGHT | HEIGHT | HEIGHT | WIRE | WIRE | WIRE |
| INSUL BARREL CRIMP | | ±0.38 [±0.15] | WIRE BARREL CRIMP | | ±0.51 [.002] | | | | | |

THIS DRAWING IS A CONTROLLED DOCUMENT.

| | |
|-------------|--|
| DIMENSIONS: | TOLERANCES UNLESS OTHERWISE SPECIFIED: |
| MM [INCHES] | |
| 0 PLC | ± - |
| 1 PLC | ± - |
| 2 PLC | ±0.25 [010] |
| 3 PLC | ± - |
| 4 PLC | ± - |
| ANGLES | ± - |

MATERIAL: SEE TABLE
FINISH: SEE TABLE

| | | |
|------------------|---|---------|
| DWN | JR RUTH | 9/17/90 |
| CHK | MS FEHER | 9/17/90 |
| APVD | RON KUZO | 9/17/90 |
| NAME | RECEPTACLE, FASTIN-FASTON, 6.35 [.250] SERIES | |
| SIZE | A3 | 00779 |
| CAGE CODE | C=42281 | |
| DRAWING NO | - | |
| RESTRICTED TO | - | |
| CUSTOMER DRAWING | SCALE | 5:1 |
| | SHEET | 1 of 1 |
| | REV | AM3 |