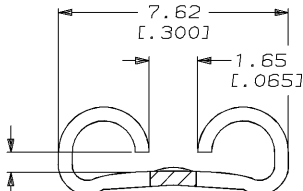
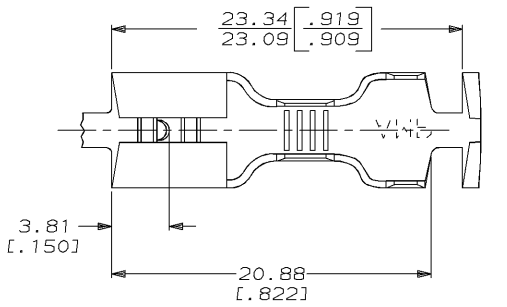


DRAWING MADE IN THIRD ANGLE PROJECTION

THIS DRAWING IS UNPUBLISHED. RELEASED FOR PUBLICATION, 19 .
 © COPYRIGHT 19 BY AMP INCORPORATED. ALL INTERNATIONAL RIGHTS RESERVED.

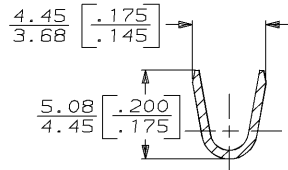
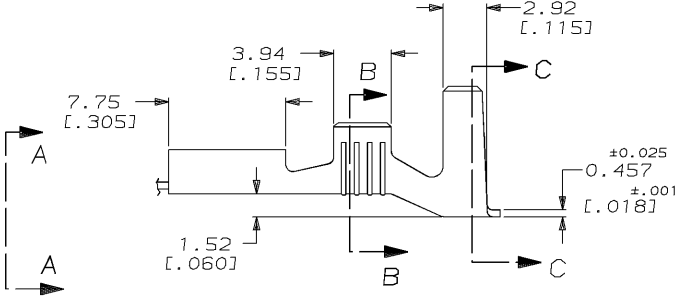
LOC	DIST	REVISIONS				DATE	APPD
AF	50	ZONE	LTR	DESCRIPTION			
		T		REV PER 0710-0535-95	11/29/95	JR/JG	

1 CONTINUOUS STRIP ON REELS

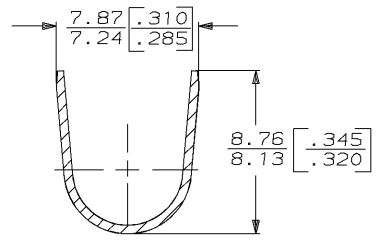


FITS 6.35 [.250] SERIES FASTON TAB

VIEW A-A
SCALE 8:1



SECTION B-B
SCALE 5:1



SECTION C-C
SCALE 5:1

5.33-6.73 or (2) 3.05 [.210-.265] or (2) [.120]	1.3-3.0mm ² or (2) 0.8mm ² (16-12) or (2) [#18's]	0.813 [.032]	41727
INSULATION RANGE	WIRE SIZE	MATING TAB THK ±0.025 [.001]	PART NO

F	7.62 [.300]	6.4 [.252]	F	3.56 [.140]	2.413 [.095]	3.0mm [.12]	DO NOT SCALE PRINT. UNLESS SPECIFIED DIMENSIONS IN mm (INCHES) TOLERANCES ON: 2 PLC DEC ± 3 PLC DEC ± 0.38 (.015) ANGLES ±
					2.083 [.082]	2.0mm [.14]	
					1.880 [.074]	1.3mm [.16]	
TYPE	WIDTH	STRIP LENGTH ±0.38 ± [.015]	TYPE	WIDTH	±.051 [.002]	HEIGHT	WIRE
INSUL BARREL CRIMP			WIRE BARREL CRIMP				

DR 7/10/89	JG RUTH
CHK 7/10/89	NS FEHER
APPD 7/10/89	C HEVERS
APPD 7/10/89	R KUZO
PRODUCT SPEC	-
APPLICATION SPEC	-
WEIGHT	-

AMP INCORPORATED Harrisburg, Pa. 17105		
NAME RECEPTACLE, FASTON™ .250 SERIES		
SIZE B	CAGE CODE 00779	DRAWING NO 41727
SCALE 4:1	SHEET 1 OF 1	

AMP 1470-15 REV 6-89
29-NOV-95 10:45:01 amp13469 Au/dep12121/dwg121/Au.Faston-prn/Au.250-str

CUSTOMER DRAWING