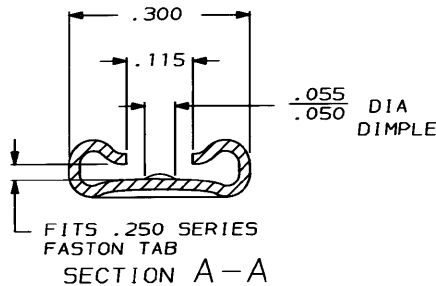
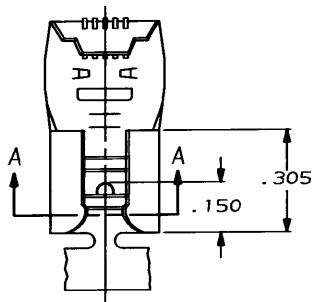


4
DRAWING MADE IN THIRD ANGLE PROJECTION
THIS DRAWING IS UNPUBLISHED. RELEASED FOR PUBLICATION, 19
© COPYRIGHT 1972 BY AMP INCORPORATED, HARRISBURG, PA. ALL INTERNATIONAL RIGHTS RESERVED. AMP PRODUCTS MAY BE COVERED BY U. S. AND FOREIGN PATENTS AND/OR PATENTS PENDING.

LOC		DIST		REVISIONS			DATE	APPROVED
AF	50	P	F	ZONE	LTR	DESCRIPTION	10/18/91	JR
						E REVISED AF-7660		



1- CONTINUOUS STRIP ON REELS.



18-12 OR (2) #16	.032 ±.001	PRE-TIN	.016 4M BRASS	62091-2
18-12 OR (2) #16	.032 ±.001	---	.016 4M BRASS	62091-1
WIRE SIZE	TAB THK	FINISH	MATERIAL	PART NO
UNLESS OTHERWISE SPECIFIED DIMENSIONS ARE IN INCHES TOLERANCES ON: 2 PL DEC ± 3 PL DEC ± .015 ANGLES ±		DR JRR/wh 2-3-86	AMP INCORPORATED Harrisburg, Pa. 17105	
MATERIAL	SEE TABLE	APPD	NAME .250 SERIES FLAG FASTON RECEPTACLE	
FINISH	SEE TABLE	PRODUCT SPEC	SIZE B	FSCM NO 00779
		APPLICATION SPEC	DRAWING NO	62091
		WEIGHT	SCALE NTS	SHEET 1 OF 1

CUSTOMER DRAWING

AMP 1470-15 REV 10-84

10 OCT 1991 11:03:41 AMP340 45281487127-06212-4 FICM-034 28-PL