

4

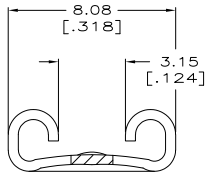
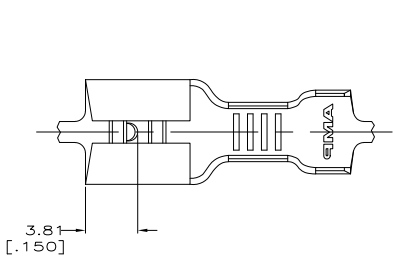
3

2

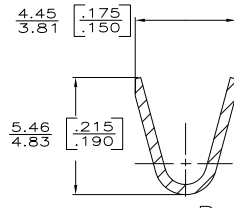
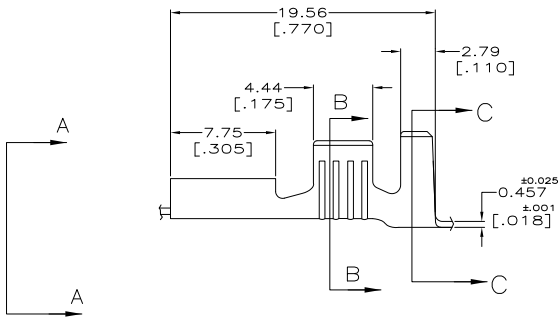
1

THIS DRAWING IS UNPUBLISHED. RELEASED FOR PUBLICATION. ALL RIGHTS RESERVED.

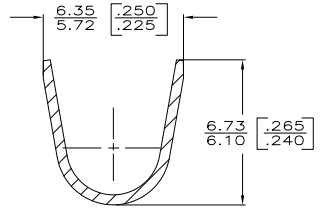
LOC	DIST	REVISIONS			
P	LTR	DESCRIPTION	DATE	BY	APPD
AF	50	AC2	REVISED PER ECO-11-005027	11MAR11	RK HMR



VIEW A-A SCALE 10:1



SECTION B-B SCALE 8:1



SECTION C-C SCALE 8:1

- 1 CONTINUOUS STRIP ON REELS
- △ MAX FIRST INSERTION FORCE, 88.96 NEWTON [20 LBS] USING GAGE 100505.
- 3 WIRE SIZE IS #14-10 AWG
- 4 INSULATION RANGE IS 3.81-5.08 [.150-.200] DIA
- 5 MATING TAB THK IS 0.81±0.025 [.032±.001]
- △ FOREIGN PRODUCTION ONLY
- △ OBSOLETE PARTS: OBSOLETE CIS STREAMLINING PER D.RENAUD/D.SINISI

F	5.33 [.210]	6.4 [.252]	F	3.30 [.130]	2.108[.083]	2.0±[.14]
					2.413[.095]	3.0±[.12]
					2.92[.115]	5.0±[.10]
TYPE	WIDTH	STRIP LENGTH ±0.38 #[.015]	TYPE	WIDTH	HEIGHT	WIRE
INSUL BARREL CRIMP			WIRE BARREL CRIMP			

△ OBSOLETE	SILVER	TEMP3 PHOS BRZ	△ 42437-6
	TIN	TEMP3 PHOS BRZ	△ 42437-5
OBSOLETE		TEMP3 PHOS BRZ	△ 42437-4
OBSOLETE	SILVER	TEMP4 BRASS	42437-3
	TIN	TEMPER 4M BRASS	42437-2
OBSOLETE		TEMP4 BRASS	42437-1
	FINISH	MATERIAL	PART NO.

THIS DRAWING IS A CONTROLLED DOCUMENT. DIM: 7/10/99
 J.R. RUTH 7/10/99
 C.K. MS FISHER 7/10/99
 P.C. MEYERS
 PRODUCT SPC: NAME: RECEPTACLE, FASTON, .250 SERIES
 APPLICATION SPEC: SIZE: CAGE CODE: DRAWING NO: RESTRICTED TO: A2 00779 C=42437
 MATERIAL: SEE TABLE FINISH: SEE TABLE WEIGHT: CUSTOMER DRAWING SCALE: 5:1 SHEET: 1 of 1 REV: AC2