

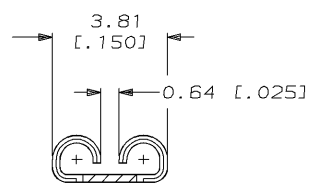
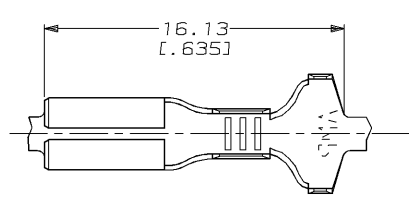
DRAWING MADE IN THIRD ANGLE PROJECTION

THIS DRAWING IS UNPUBLISHED. RELEASED FOR PUBLICATION, 19 .

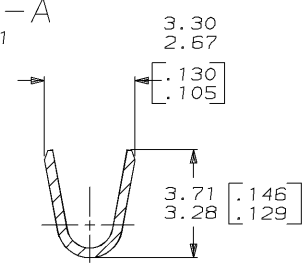
© COPYRIGHT 19 BY AMP INCORPORATED. ALL INTERNATIONAL RIGHTS RESERVED.

LOC	DIST	P	F	ZONE	LTR	REVISIONS	DATE	APPD
AF	50					D REDRAWN PER 0710-0028-96	2/8/96	JR/PD

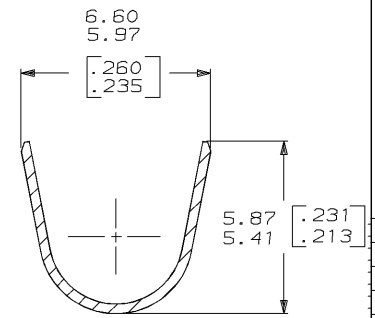
- 1 CONTINUOUS STRIP ON REELS.
- 2 ACCEPTS WIRE SIZE [#18-#14] AWG.
- 3 INSULATION RANGE TO BE 2.79-4.83 [.110-.190] DIA.
- 4 MATING TAB THK TO BE 0.813±0.025 [.032±.001].



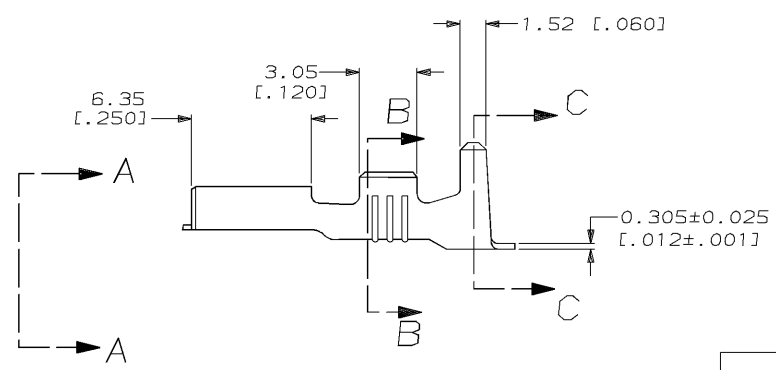
VIEW A-A
SCALE 8:1



SECTION B-B
SCALE 8:1



SECTION C-C
SCALE 8:1



63093-1
PART NO

DO NOT SCALE PRINT. UNLESS SPECIFIED DIMENSIONS IN mm [INCHES] TOLERANCES ON: 2 PLC DEC ± 0.38 (.015) 3 PLC DEC ± - ANGLES ± -		DR 2/8/96 JR RUTH	AMP AMP Incorporated Harrisburg, PA 17105-3608	NAME RECEPTACLE, FASTON, 2.79 [.110] SERIES	
MATERIAL H04 BRASS	CHK 2/8/96 P FORTNEY	APPD 2/8/96 P BESANTIS		SIZE B	CAGE CODE 00779
FINISH TIN OVER COPPER	PRODUCT SPEC -	APPD 2/8/96 V KARABCIEVSKY	DRAWING NO C=63093	SCALE 5:1 SHEET 1 OF 1	

THIS DRAWING IS A CONTROLLED DOCUMENT FOR AMP INCORPORATED. IT IS SUBJECT TO CHANGE AND THE CONTROLLING ENGINEERING ORGANIZATION SHOULD BE CONTACTED FOR THE LATEST REVISION.

CUSTOMER DRAWING