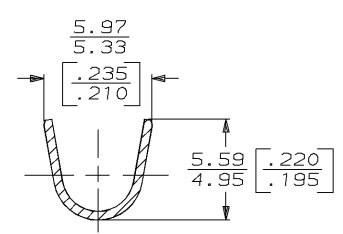
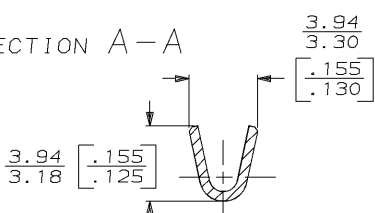
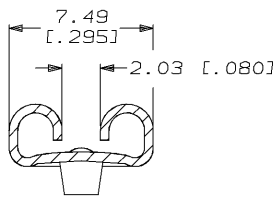
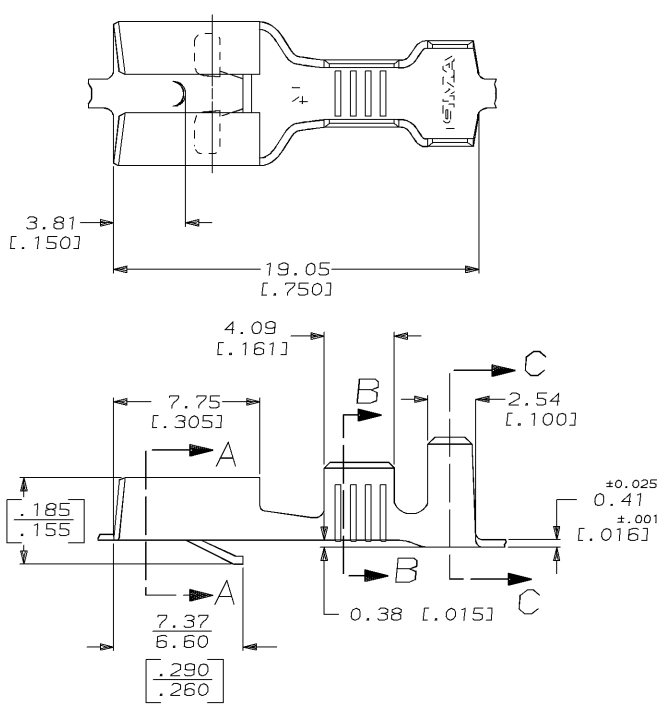


DRAWING MADE IN THIRD ANGLE PROJECTION

THIS DRAWING IS UNPUBLISHED. RELEASED FOR PUBLICATION, 19 .
 © COPYRIGHT 19 BY AMP INCORPORATED. ALL INTERNATIONAL RIGHTS RESERVED.

LOC	DIST	REVISIONS				
P	F	ZONE	LTR	DESCRIPTION	DATE	APPD
AF	50	AG		REV PER 0710-0302-95	7/13/95	JR/JG



1 CONTINUOUS STRIP ON REELS.

THIS DRAWING IS A CONTROLLED DOCUMENT FOR AMP INCORPORATED. IT IS SUBJECT TO CHANGE AND THE CONTROLLING ENGINEERING ORGANIZATION SHOULD BE CONTACTED FOR THE LATEST REVISION.

2.54-4.32 DIA [.100-.170] DIA	0.8-2.0mm ² [18-14] AWG	0.81 [.032]	60634-1
INSUL RANGE	WIRE SIZE	MATING TAB THK ±0.025 [±.001]	PART NO
DO NOT SCALE PRINT. UNLESS SPECIFIED DIMENSIONS IN mm [INCHES] TOLERANCES ON: 2 PLC DEC ± 0.25 (.010) 3 PLC DEC ± - ANGLES ± -	DR 8/19/93 JR RTH CHK 8/19/93 NS FEHER APPD 8/19/93 J SILESPIE APPD 8/19/93 R REINER PRODUCT SPEC -	AMP AMP Incorporated Harrisburg, PA 17105-3608 NAME RECEPTACLE, FASTIN-FASTON, 6.35 [.250] SERIES	
MATERIAL 4M BRASS	FINISH -	APPLICATION SPEC 114-2025	WEIGHT -
SIZE B		CAGE CODE 00779	DRAWING NO C=60634
SCALE 5:1		SHEET 1 OF 1	

AMP 1470-15 REV 3-92
 13-JUL-95 14:43:23 amp13469 /ws/dept2121/dwg2121/u.fastin-on/u.250-str

CUSTOMER DRAWING