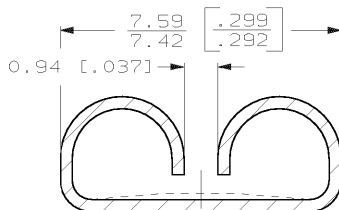
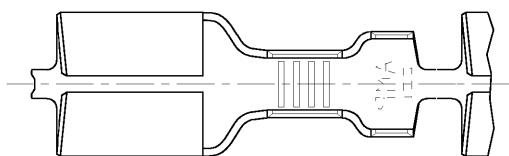


DRAWING MADE IN THIRD ANGLE PROJECTION

THIS DRAWING IS UNPUBLISHED. RELEASED FOR PUBLICATION, 19
 © COPYRIGHT 19 BY AMP INCORPORATED. ALL INTERNATIONAL RIGHTS RESERVED.

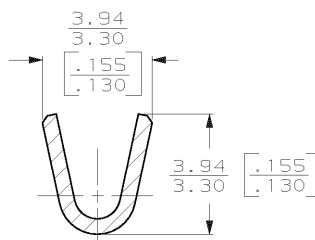
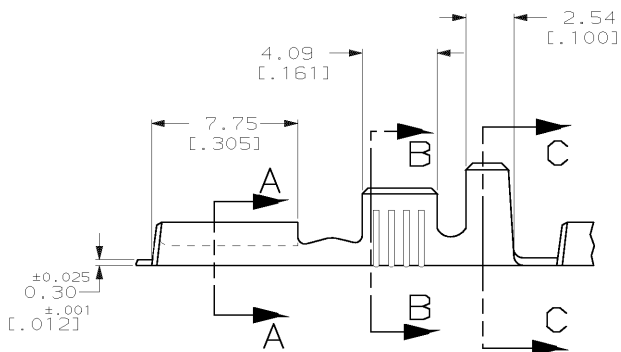
LOC	DIST	P	F	ZONE	LTR	REVISIONS	DATE	APPD
AF	50					ADDED -3 PER 063A-0193-01	13MAR01	JR/PD



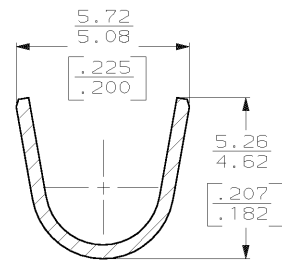
- 1 CONTINUOUS STRIP ON REELS.
- 2 MATING TAB TO BE 0.81±0.025 [.032±.001].
- 3 WIRE SIZE IS [#20-#14] AWG.
- 4 INSULATION RANGE IS 2.16-3.43 [.085-.135] DIA.

PRELIMINARY - NOT FOR PRODUCTION

SECTION A-A
SCALE 10:1



SECTION B-B
SCALE 8:1



SECTION C-C
SCALE 8:1

PLAIN	63648-3
TIN - STRESS RELIEVED	63648-2
PLAIN - STRESS RELIEVED	63648-1
FINISH	PART NO

DO NOT SCALE PRINT. UNLESS SPECIFIED DIMENSIONS IN MM [INCHES] TOLERANCES ON: 2 PLC DEC ± 0.25 [.010] 3 PLC DEC ± - ANGLES ± -	DR 4/3/92 JR RUTH	AMP AMP Incorporated Harrisburg, PA 17105-3608	NAME RECEPTACLE, FASTON, 6.35 [.250] SERIES
	CHK 4/3/92 MS FEHER		
MATERIAL H04 BRASS	APPD 4/3/92 C HEIERS	PRODUCT SPEC -	SIZE B
	APPD 4/3/92 D REINER		CAGE CODE 00779
FINISH SEE TABLE	APPLICATION SPEC -	WEIGHT -	DRAWING NO 63648
			SCALE 5:1 SHEET 1 OF 1

AMP 1470-15 REV 7-90
08 JAN 1993 10:49:52 AMP13469 <U5128A>DEPT2121>DWG2121>U.FASTON-CEB>U.250-STR

CUSTOMER DRAWING