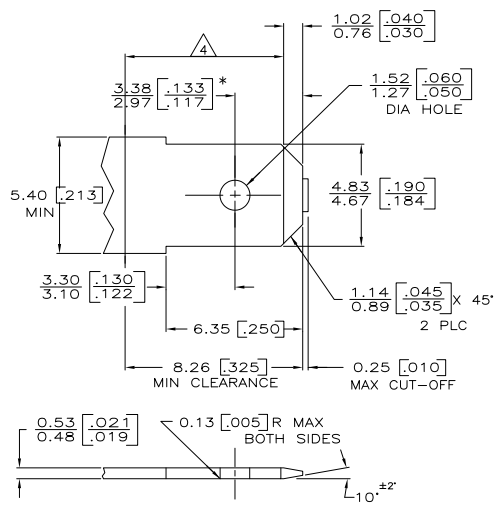


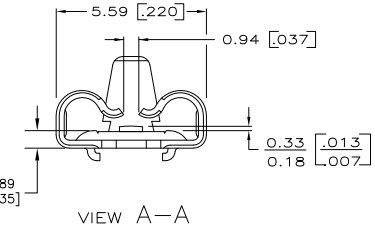
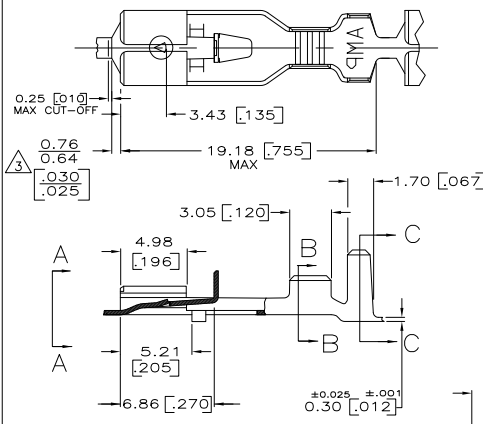
THIS DRAWING IS UNPUBLISHED. RELEASED FOR PUBLICATION. ALL RIGHTS RESERVED. BY TYCO ELECTRONICS CORPORATION.

LOC	REV	DATE	DESCRIPTION	BY	APPD
AF	50				
	J4		REVISED PER ECR 08-021823		
		11SEP08		HMR	EH

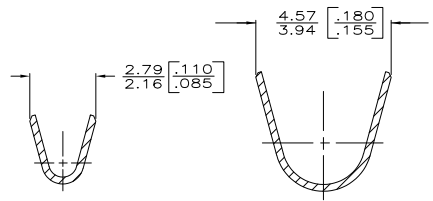
SUGGESTED MATING TAB



- MATL: #2 HARD BRASS OR NICKEL PLATE STEEL.
 - NO BURRS PERMISSIBLE AT HOLE.
 - TIN PLATING IS REQUIRED ON BRASS WHEN TERMINAL TEMPERATURE IS OVER 225° F.
 - MUST BE FLAT WITHIN 0.076 [003] OVER THIS LENGTH.
 - HOLE MUST BE SYMMETRICAL ABOUT TAB \uparrow WITHIN 0.076 [003]
- * TO BE USED ONLY WHEN SHOULDER IS ELIMINATED.



- DIMENSIONS IN BRACKETS ARE IN INCHES.
- CONTINUOUS STRIP ON REELS.
- THE 0.76 [030] DIMENSION MUST BE MAINTAINED BY THE APPLICATOR CUT-OFF TO ENSURE THE PROPER LOCKING FUNCTION OF THE RECEPTACLE.
- WIRE SIZE IS FOR A [#24-#20] AWG.
- INSULATION RANGE IS 1.52-2.79 [060-.110] DIA.
- GOLD PLATE 0.00127 [000050] MIN THK OVER 0.00127 [000050] MIN NICKEL PL.
- GOLD FLASH PL. 0.00012 [000005] MIN THK OVER 0.00127 [000050] MIN NICKEL PL
- PRELIMINARY - NOT FOR PRODUCTION



GOLD / NICKEL	H06 BRASS	63196-5
---	H06 BRASS	63196-4
GOLD / NICKEL	H06 BRASS	63196-3
PRE-TIN	H06 BRASS	63196-2
TIN	H06 BRASS	63196-1
FINISH	MATERIAL	PART NO.

THIS DRAWING IS A CONTROLLED DOCUMENT.		DATE	2/28/97	Tyco Electronics Corporation	
DRAWN BY		R. RUTH	3/9/97	Harrisburg, PA 17105-3608	
CHECKED BY		G. YETTER	3/9/97	Tyco Electronics	
APPROVED BY		R. KUZO	3/9/97	RECEPTACLE, POSITIVE LOCK, 187 SERIES	
DIMENSIONS: mm [INCHES]		TOLERANCES UNLESS OTHERWISE SPECIFIED:	PRODUCT SPEC	SIZE	A2
0 PLC	± .	1 PLC	± .	QAGE CODE	00779
1 PLC	± .	2 PLC	± .	DRAWING NO	63196
2 PLC	± .	3 PLC	± 0.25 .010	RESTRICTED TO	
3 PLC	± .	4 PLC	± .	WEIGHT	
4 PLC	± .	ANGLES	± .	CUSTOMER DRAWING	
MATERIAL	SEE TABLE	FINISH	SEE TABLE	SCALE	5:1
				SHEET	1 of 1
				REV	J4