

4

3

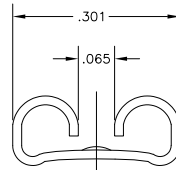
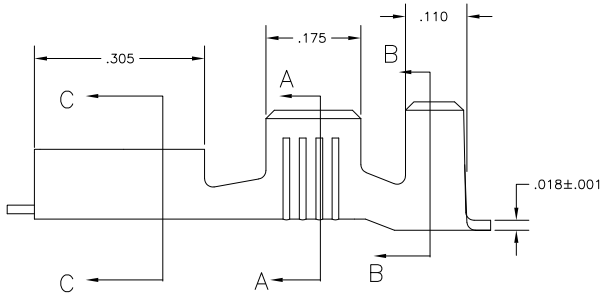
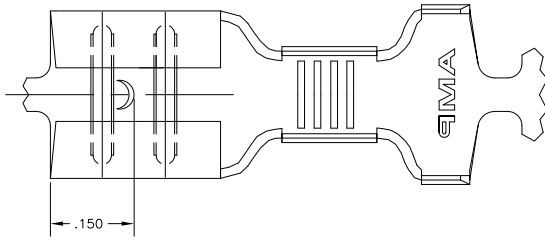
2

1

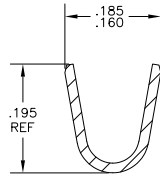
THIS DRAWING IS UNPUBLISHED. RELEASED FOR PUBLICATION. ALL RIGHTS RESERVED.

LOC		DIBT		REVISIONS			
P	LTR	DESCRIPTION	DATE	BY	APPD		
H2		REVISED PER ECO-11-004917	11MAR11	RK	HMR		

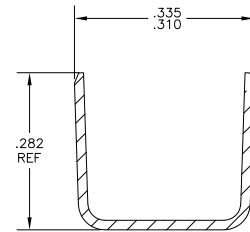
- CONTINUOUS STRIP ON REELS
- ACCEPTS #14#10 AWG OR TWO #14's WIRE SIZES, CRIMP WIDTH, .140, F TYPE
- INSULATION RANGE IS .225-.275 DIA OR TWO AT .140 MAX. CRIMP WIDTH, .310, F TYPE
- MATING TAB THK IS .032±.001.



SECTION C-C



SECTION A-A



SECTION B-B

-	60635-3
.000150 MIN SILVER	60635-2
.000080 MIN TIN	60635-1
FINISH	PART NO

THIS DRAWING IS A CONTROLLED DOCUMENT.		DRW		CHK		APPD		NAME		RESTRICTED TO	
DIMENSIONS: INCHES		J.R. RUTH		27AJK02		P. DESANTIS		28AJK02		-	
OTHER DIMENSIONS: OTHER UNITS: SEE TABLE		P. DESANTIS		28AJK02		P. DESANTIS		28AJK02		-	
MATERIAL: 4M BRASS		FINISH: SEE TABLE		APPLICATION SPEC: -		SIZE: A2		CAGE CODE: 00779		DRAWING NO: C-60635	
CUSTOMER DRAWING		SCALE: 8:1		SHEET: 1 of 1		REV: H2					