

4

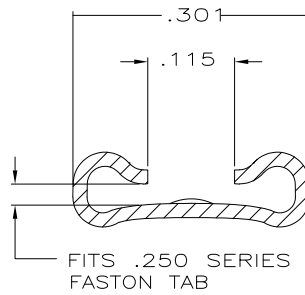
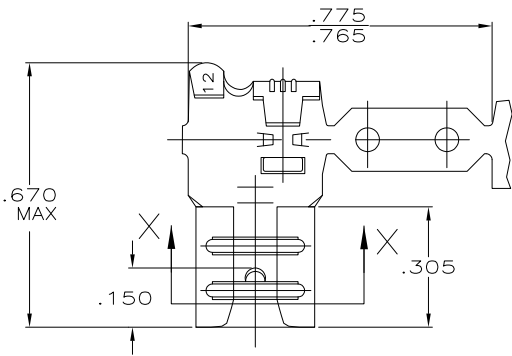
3

2

1

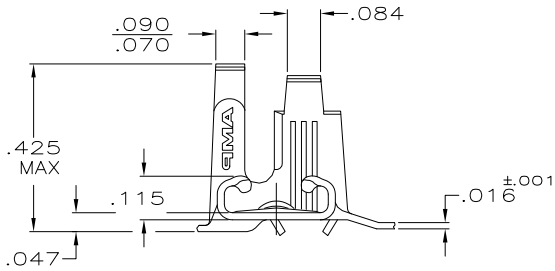
THIS DRAWING IS UNPUBLISHED. RELEASED FOR PUBLICATION
 © COPYRIGHT - By - ALL RIGHTS RESERVED.

LOC	DIST	REVISIONS				
P	LTR	DESCRIPTION	DATE	DWN	APVD	
AF	50					
P1		REVISED PER ECO-11-004917	11MAR11	RK	HMR	



SECTION X-X
SCALE 8:1

- 1 CONTINUOUS STRIP ON REELS.
- 2 FOREIGN PRODUCTION ONLY.
- 3 TIN PLATE .000080 MIN THK.
- 4 MATING TAB THK IS .032±.001.
- 5 WIRE SIZE IS #18-#12 AWG
- 6 INSULATION RANGE IS .110-.210 DIA.
- 7 PRELIMINARY - NOT FOR PRODUCTION



.000150 MIN NICKEL	T2 STEEL	△ 42742-5
PRE-TIN	4M BRASS	△ 42742-3
TIN △	4M BRASS	42742-2
-	4M BRASS	42742-1
FINISH	MATERIAL	PART NO

THIS DRAWING IS A CONTROLLED DOCUMENT.		DWN	JR RUTH	1/23/91	TE TE Connectivity
DIMENSIONS:		CHK	MS FEHER	1/24/93	
INCHES		APVD	J GILLESPIE	1/24/93	
TOLERANCES UNLESS OTHERWISE SPECIFIED:		NAME			
0 PLC ± -		PRODUCT SPEC			RECEPTACLE, FASTON,™ FLAG, .250 SERIES
1 PLC ± -		APPLICATION SPEC			
2 PLC ± -		WEIGHT			RESTRICTED TO
3 PLC ± .015		SIZE			CAGE CODE
4 PLC ± -		DRAWING NO			DRAWING NO
ANGLES ± -		MATERIAL			4M BRASS
FINISH		MATERIAL			4M BRASS
SEE TABLE		WEIGHT			—
CUSTOMER DRAWING		SIZE			A3
SCALE		CAGE CODE			00779
SCALE 4:1		DRAWING NO			42742
SHEET		SHEET			1 OF 1
REV		REV			P1