

4

3

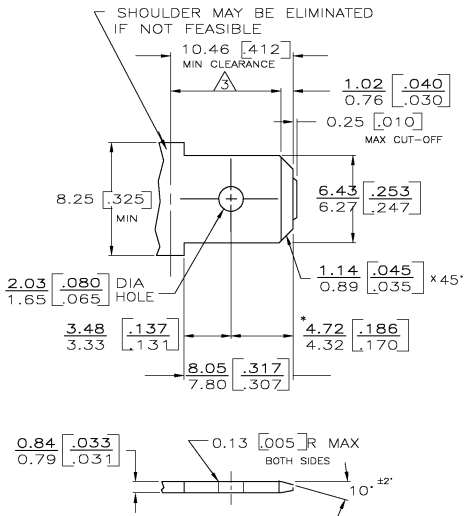
2

1

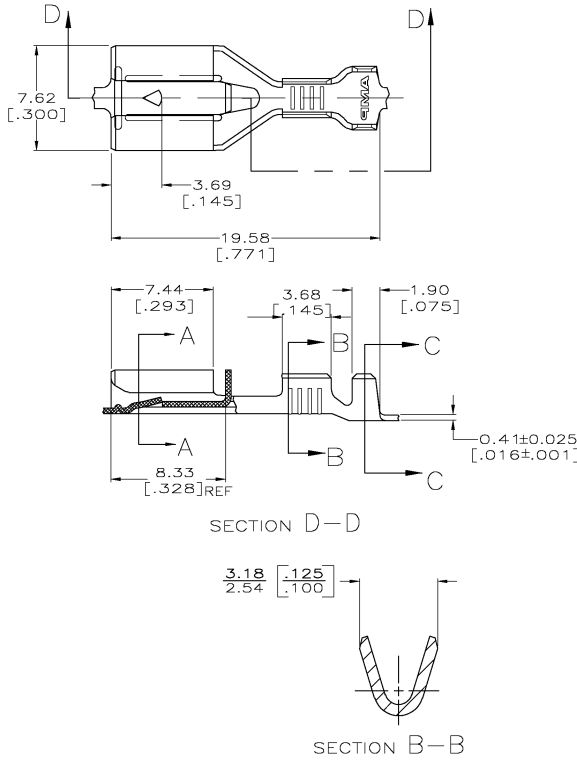
THIS DRAWING IS UNPUBLISHED. RELEASED FOR PUBLICATION
 © COPYRIGHT BY TYCO ELECTRONICS CORPORATION. ALL RIGHTS RESERVED.

LOC	DIST	REVISIONS			
P	LTR	DESCRIPTION	DATE	BY	APP'D
AF	50				
F		REV PER 063A-0236-04	05APR04	JR	GP

SUGGESTED MATING TAB



- 1 - MATL: 1/2H BRASS OR NICKEL PL STEEL.
 - 2 - NO BURRS PERMISSIBLE AT HOLE.
 - 3 - MUST BE FLAT WITHIN 0.076 [.003] OVER THIS LENGTH.
 - 4 - TIN PLATING IS REQUIRED ON BRASS WHEN TERMINAL TEMP. IS OVER 225°F, 105°C
 - 5 - HOLE MUST BE SYMMETRICAL ABOUT TAB ϕ WITHIN 0.076 [.003]
- * TO BE USED ONLY WHEN SHOULDER IS ELIMINATED.



1 CONTINUOUS STRIP ON REELS.

TIN 0.002032 [.000080] MIN	1.52-2.54 [.060-.100] DIA	[#22-#18] AWG	63933-2
-	1.52-2.54 [.060-.100] DIA	INSULATION RANGE	63933-1
FINISH		WIRE SIZE	PART NO.

THIS DRAWING IS A CONTROLLED DOCUMENT.		DRW: JR RUTH 9/4/98	Tyco Electronics Corporation Harrisburg, PA 17105
		CHK: MS FRIER 9/4/98	
		APP: J GILLISPIE 9/4/98	RECEPTACLE, POSITIVE LOCK, 6.35 [.250] SERIES
		PRODUCT SPEC: -	
DIMENSIONS: INCHES		APPLICATION SPEC: 114-2061	RESTRICTED TO: -
MATERIAL: H06 BRASS		FINISH: SEE TABLE	SCALE: 5:1 SHEET 1 OF 1 REV F
		CUSTOMER DRAWING	DATE CODE: A2 00779

63933

A