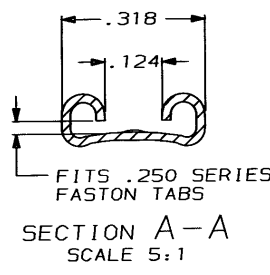
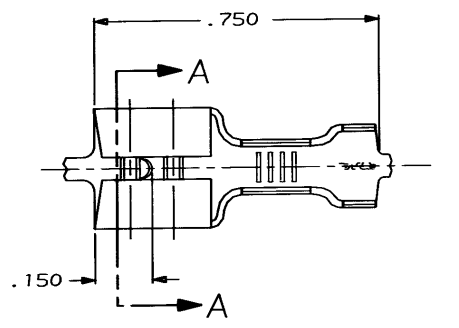


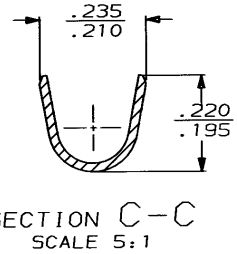
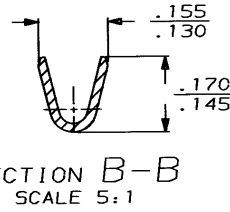
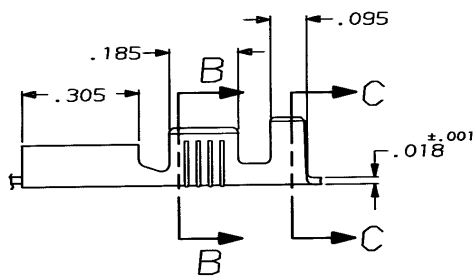
4
DRAWING MADE IN THIRD ANGLE PROJECTION

3
THIS DRAWING IS UNPUBLISHED. RELEASED FOR PUBLICATION .19
© COPYRIGHT 19 BY AMP INCORPORATED. ALL INTERNATIONAL RIGHTS RESERVED.

LOC	DIST	REVISIONS				
AF	50	ZONE	LTR	DESCRIPTION	DATE	APPD
		K		REDRA & SEP FROM 41773 PER AF-7437	6/13/91	JR



- 1 CONTINUOUS STRIP ON REELS.
- 2 MAX FIRST ENGAGEMENT FORCE, 20 LBS, USING GAGE 100505.
- 3 FEED TO BE .840±.005.



.120-.170 DIA	18-14 AWG	.032	41832
INSULATION RANGE	WIRE SIZE	MATING TAB THK ±.001	PART NO
DO NOT SCALE PRINT. UNLESS SPECIFIED DIMENSIONS ARE IN INCHES TOLERANCES ON: 1 P.L.C. DEC ± .015 2 P.L.C. DEC ± .015 3 P.L.C. DEC ± .015 ANGLES ± .	DR 6/13/91 JR RUTH CHK 6/13/91 MS FEYER APPD 6/13/91 C MEYERS APPD 6/13/91 D REIMER	AMP AMP Incorporated Harrisburg, PA 17105-3608 NAME RECEPTACLE, FASTON™ .250 SERIES	
MATERIAL #4H BRASS	PRODUCT SPEC -	SIZE B	CAGE CODE 00779
FINISH TIN .000080 MIN	APPLICATION SPEC -	SCALE 4:1	DRAWING NO 41832
WEIGHT -			SHEET 1 OF 1

AMP 1470-15 REV 11-88

CUSTOMER DRAWING