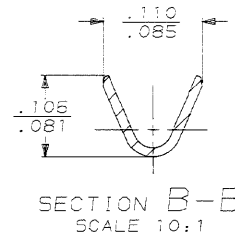
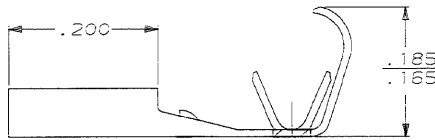
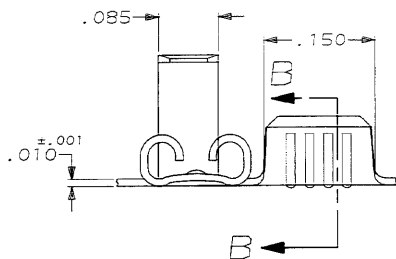
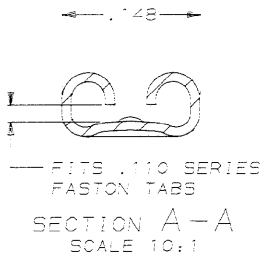
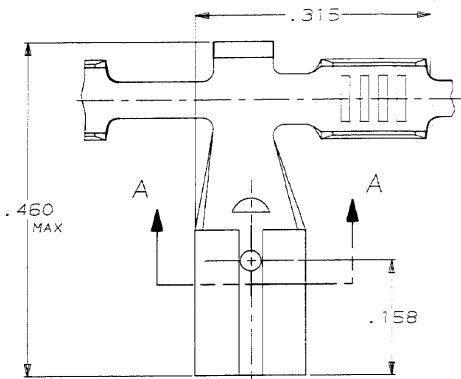


DRAWING MADE IN THIRD ANGLE PROJECTION

THIS DRAWING IS UNPUBLISHED. RELEASED FOR PUBLICATION

© COPYRIGHT 1961 BY AMP INCORPORATED. ALL INTERNATIONAL RIGHTS RESERVED.

LOC	DIST	REVISIONS			
AF	50	NO	DATE	APPR	
		ZONE	LTR	DESCRIPTION	
		B		REDRAWN AF-7403	4/24/61 JR



CONTINUOUS STRIP ON REELS

.065-.100 DIA	22-18 AWG	.018	61459-1
INSULATION RANGE	WIRE SIZE	MATING TAB THK ±.001	PART NO
DO NOT SCALE PRINT. UNLESS SPECIFIED. DIMENSIONS ARE IN INCHES. TOLERANCES ON: 2 PLC DEC = .015 3 PLC DEC = .015 ANGLES = -	DR 4/24/61 JR RUTH CHK 4/24/61 NS FEINER APPD 4/24/61 C MEYERS	AMP AMP Incorporated Harrisburg, PA 17105-3608	
MATERIAL #4H BRASS	PRODUCT SPEC -	NAME RECEPTACLE, FASTON, FLAG, .110 SERIES	
FINISH PRE-TIN	APPLICATION SPEC -	SIZE B	CASE CODE 00779
	WEIGHT -	SCALE 8:1	DRAWING NO 61459
			SHEET 1 OF 1

AMP 1470-15 REV 11-69

24 APR 1961 11:47:36 AMP13469 051284 SEP70 21-046212140 FASTON-PRONG .110-FL

CUSTOMER DRAWING