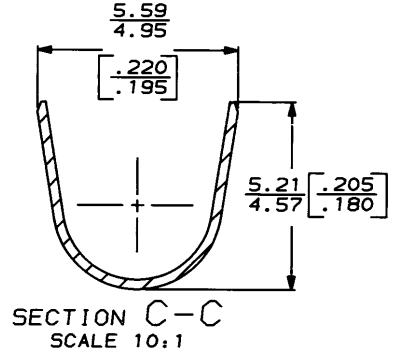
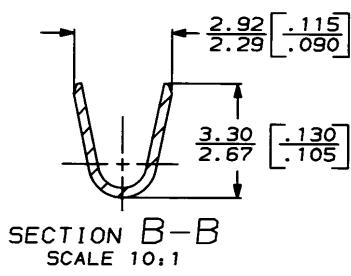
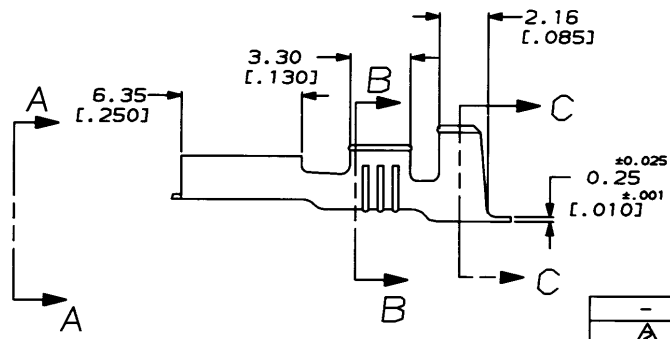


1 CONTINUOUS STRIP ON REELS.  
 2 TIN PLATE 0.002032 [.000080] MIN THK.



|        |  |   |  |                  |
|--------|--|---|--|------------------|
| -      | 3.81-4.32  | 0.5-1.4mm <sup>2</sup>  | 0.51 [.020]  | 62191-2          |
| A      | [.150-.170] DIA  | [20-16] AWG   |  | 62191-1          |
| FINISH | INSUL RANGE  | WIRE SIZE   | MATING TAB THK ±0.025 [.001]                             | PART NO          |
|        | DO NOT SCALE PRINT. UNLESS SPECIFIED DIMENSIONS IN IN (INCHES) TOLERANCES ON: 2 PLC DEC ± 0.38 (.015) 3 PLC DEC ± . - ANGLES ± - | DR 3/28/91<br>BY RUTH<br>CHK 3/28/91<br>MS PFER<br>APPD 3/28/91<br>C REVER<br>APPD 3/28/91<br>D REVER | <b>AMP</b> AMP Incorporated<br>Harrisburg, PA 17105-3608 |                  |
|        | MATERIAL #4H BRASS   | PRODUCT SPEC -  | NAME RECEPTACLE, FASTON, 2.79 [.110] SERIES              |                  |
|        | FINISH SEE TABLE   | APPLICATION SPEC -  | SIZE B   | CAGE CODE 00779  |
|        |  | WEIGHT -  | SCALE 5:1  | DRAWING NO 62191 |
|        |  |   |  | SHEET 1 OF 1     |

**METRIC**