

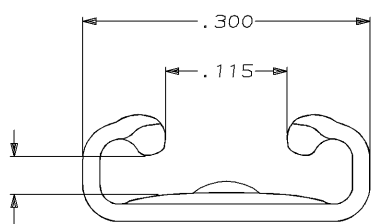
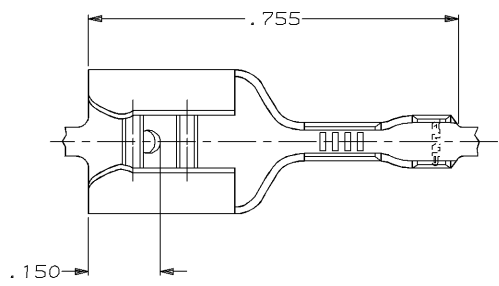
DRAWING MADE IN THIRD ANGLE PROJECTION

THIS DRAWING IS UNPUBLISHED. RELEASED FOR PUBLICATION, 19 .

© COPYRIGHT 19 BY AMP INCORPORATED. ALL INTERNATIONAL RIGHTS RESERVED.

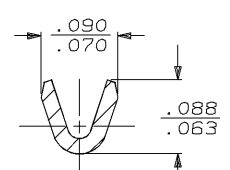
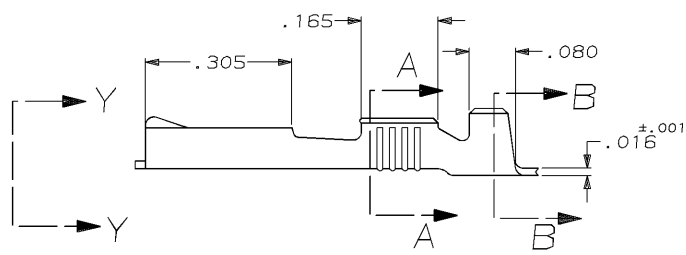
LOC	DIST	P	F	ZONE	LTR	REVISIONS	DATE	APPD	
AF	50					C	REACTIVATE -2 PER 0710-0301-95	7/13/95	JR/JG

1 CONTINUOUS STRIP ON REELS.

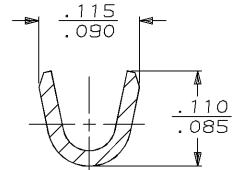


FITS .250 SERIES FASTON TABS

VIEW Y-Y  
SCALE 10:1



SECTION A-A  
SCALE 10:1



SECTION B-B  
SCALE 10:1

TIN .000080 MIN	.040-.060 DIA	26-22 AWG	.032	61202-2
FINISH	INSULATION RANGE	WIRE SIZE	MATING TAB THK ±.001	61202-1
DO NOT SCALE PRINT. UNLESS SPECIFIED DIMENSIONS ARE IN INCHES TOLERANCES ON: 2 PLC DEC ± .015 ANGLES ±	DR 4/18/91 JR RUTH CHK 4/18/91 NS FEHER APPD 4/18/91 C NEVERS APPD 4/18/91 D REINER	<b>AMP</b> AMP Incorporated Harrisburg, PA 17105-3608 NAME RECEPTACLE, FASTON, .250 SERIES		
MATERIAL #4H BRASS	PRODUCT SPEC	SIZE B	CAGE CODE 00779	DRAWING NO 61202
FINISH SEE TABLE	APPLICATION SPEC	SCALE 5:1	SHEET 1 OF 1	

CUSTOMER DRAWING

AMP 1470-15 REV 11-89  
13-JUL-95 15:07:41 amp13469 Au/dep12121/dwg1211/u.faston-cab/u.250-str