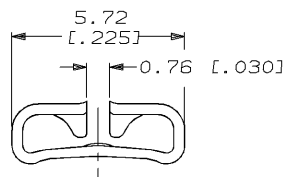
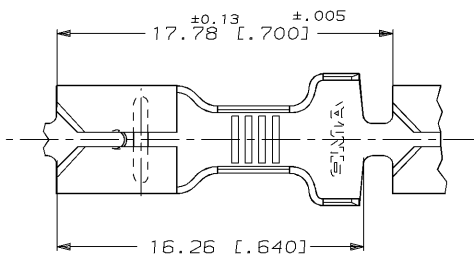


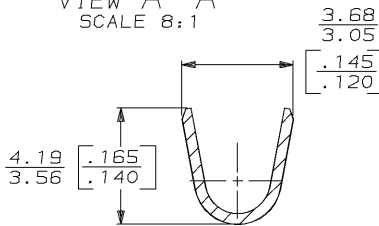
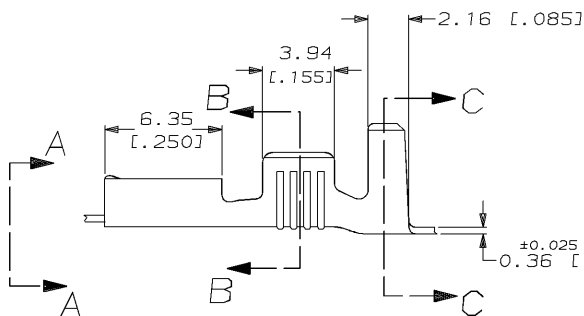
THIS DRAWING IS UNPUBLISHED. RELEASED FOR PUBLICATION, 19 .
 © COPYRIGHT 19 BY AMP INCORPORATED. ALL INTERNATIONAL RIGHTS RESERVED.

LOC	DIST	ZONE	LTR	REVISIONS	DATE	APPD
AF	50			REV PER 0710-0104-96	3/20/96	JR/PD

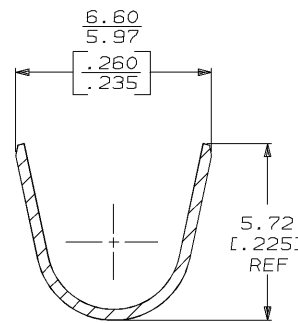
1 CONTINUOUS STRIP ON REELS.



VIEW A-A
SCALE 8:1



SECTION B-B
SCALE 8:1



SECTION C-C
SCALE 8:1

3.81-4.83 DIA [.150-.190] DIA	0.8-2.0mm ² [#18-14] AWG	0.81 [.032]	63697-1
INSUL RANGE	WIRE SIZE	MATING TAB THK±0.025 [0.001]	PART NO
DO NOT SCALE PRINT. UNLESS SPECIFIED DIMENSIONS ARE IN INCHES TOLERANCES ON: 1. ALL DIM ± 0.005 [0.001] 2. PLC DEC ± 0.25 [0.010] 3. PLC DEC ± - ANGLES ± -	DR 2/19/93 JR RUTH CHK 2/19/93 MS FEHER APPD 2/19/93 C MEYERS APPD 2/19/93 R KUZO PRODUCT SPEC	AMP AMP INCORPORATED Harrisburg, Pa. 17105 RECEPTACLE, FASTON™ 4.75 [0.187] SERIES	
MATERIAL H04 BRASS	FINISH PRE-TIN	SIZE B	CAGE CODE 00779
	APPLICATION SPEC 114-2036	SCALE 5:1	DRAWING NO 63697
	WEIGHT -		SHEET 1 OF 1

AMP 1470-15 REV 6-89
 20-MAR-96 11:34:17 amp13469 /ws/dept2121/dwg2121/u.faston-ceb/u.187-str

CUSTOMER DRAWING