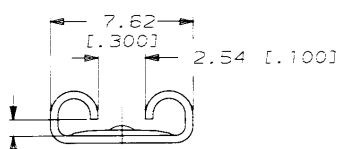
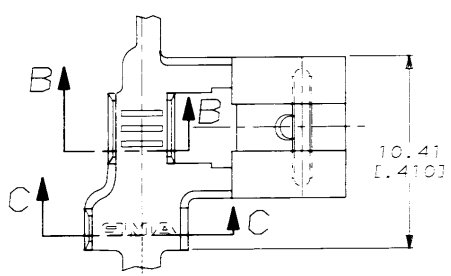


DRAWING MADE IN THIRD ANGLE PROJECTION

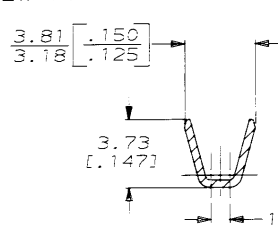
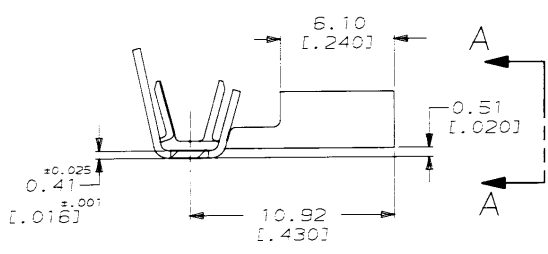
THIS DRAWING IS UNPUBLISHED. RELEASED FOR PUBLICATION. BY AMP INCORPORATED. ALL INTERNATIONAL RIGHTS RESERVED.

| LOC | DIST | REVISIONS | | | | DATE | APPD |
|-----|------|-----------|---|------|-----------------|----------|------|
| AF | 50 | P | F | ZONE | DESCRIPTION | | |
| | | | | F | REVISED AF-7659 | 10/17/91 | JR |

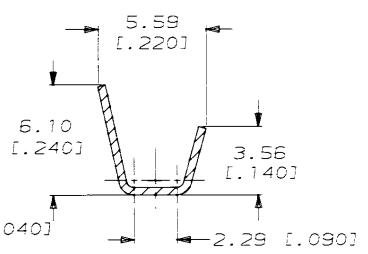


FITS 6.35 [0.250] SERIES FASTON TAB

VIEW A-A



SECTION B-B



SECTION C-C

1 CONTINUOUS STRIP ON REELS.

| TIN | 2.79-4.06 | 0.8-2.0mm ² | 0.81 | 63010-2 |
|---------------------------------------------------------------------------|----------------------|------------------------|-------------------------------------------------------------------------------------------------------------------------------------------------------------------------------------------|---------|
| - | [0.110-0.160] DIA | [18-14] AWG | [0.032] | 63010-1 |
| FINISH | INSUL RANGE | WIRE SIZE | MATING TAB THK ±0.025 [0.001] | PART NO |
| DO NOT SCALE PRINT. UNLESS SPECIFIED DIMENSIONS IN INCHES! TOLERANCES ON: | DR 4/8/91 JR RUT | CHK 4/8/91 NS FICER | AMP AMP Incorporated Harrisburg, PA 17105-3608 NAME RECEPTACLE, FASTON, FLAG, 6.35 [0.250] SERIES SIZE CASE CODE DRAWING NO B 00779 63010 SCALE 5:1 SHEET 1 OF 1 | |
| ±0.025 | APPD 4/8/91 C MEYERS | PRODUCT SPEC | | |
| ±0.001 | APPD 4/8/91 R KUDZ | APPLICATION SPEC | | |
| ±0.016 | APPD 4/8/91 R KUDZ | WEIGHT | | |
| MATERIAL | 4M BRASS | FINISH | SEE TABLE | |

METRIC

AMP 1470-15 REV 11-85
 17 001 186 15 11 85 AMP 13465 457284 DEPT 2210621214 FASTON-GER-250-F

CUSTOMER DRAWING