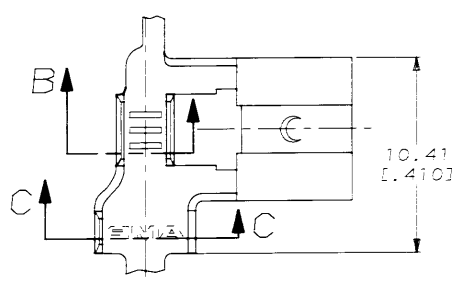
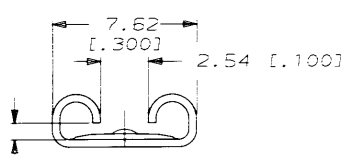


DRAWING MADE IN THIRD ANGLE PROJECTION
 THIS DRAWING IS UNPUBLISHED. RELEASED FOR PUBLICATION
 © COPYRIGHT 1989 BY AMP INCORPORATED. ALL INTERNATIONAL RIGHTS RESERVED.

LOC	DIST	REVISIONS				
P	F	ZONE	LTR	DESCRIPTION	DATE	APPD
AF	50			E REVISED AF-7656	10/9/91	JR

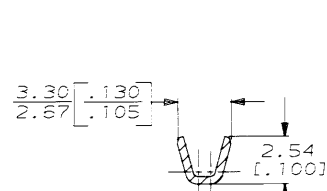
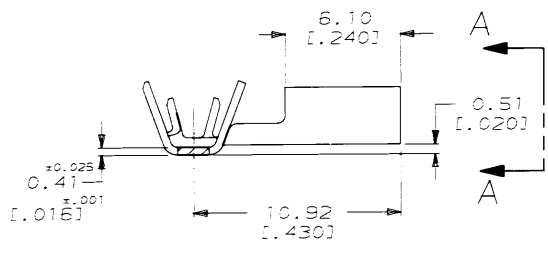


1 CONTINUOUS STRIP ON REELS.

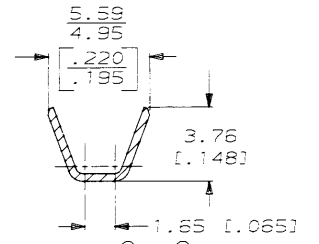


FITS 6.35 [0.250] SERIES FASTON TAB

VIEW A-A



SECTION B-B



SECTION C-C

TIN	1.52-2.54	0.3-0.9mm ²	0.81	62814-2
	[0.060-0.100] DIA	[22-18] AWG	[0.032]	62814-1
FINISH	INSUL RANGE	WIRE SIZE	MATING TAB THK ±0.025 [0.001]	PART NO
DO NOT SCALE PRINT. UNLESS SPECIFIED DIMENSIONS IN INCHES! TOLERANCES ON:	DR 4/8/91 JR RUTN	AMP AMP Incorporated Harrisburg, PA 17105-3608 NAME RECEPTACLE, FASTON, FLAG, 6.35 [0.250] SERIES SIZE CAGE CODE DRAWING NO B 00779 62814 SCALE 5:1 SHEET 1 OF 1		
± P/L DEC ± 0.38 (0.15)	CHK 4/8/91 MS FEHER			
ANGLES ±	APPD 4/8/91 C MEYERS			
MATERIAL 4M BRASS	APPD 4/8/91 B KUZD			
FINISH SEE TABLE	PRODUCT SPEC	APPLICATION SPEC	WEIGHT	

METRIC

AMP 1470-15 REV 11-89
 AMP1345 4-52M-00779-00627140 FASTON-METRIC 050-F1

CUSTOMER DRAWING