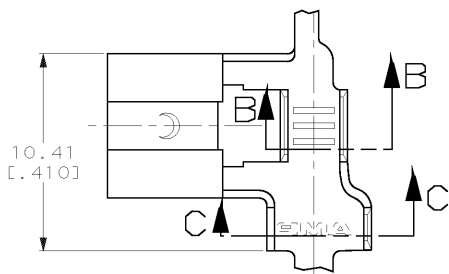


DRAWING MADE IN THIRD ANGLE PROJECTION

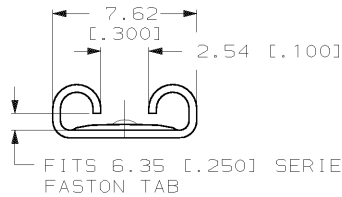
THIS DRAWING IS UNPUBLISHED. RELEASED FOR PUBLICATION, 19 .

© COPYRIGHT 19 BY AMP INCORPORATED. ALL INTERNATIONAL RIGHTS RESERVED.

LOC	DIST	P	F	ZONE	LTR	DESCRIPTION	DATE	APPD
AF	50				F	REV PER 0L10-0283-97	7/14/97	JR

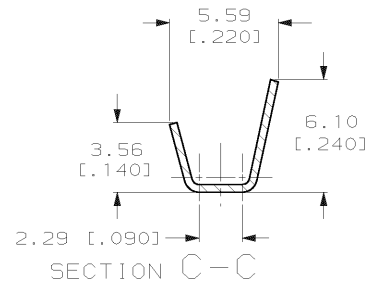
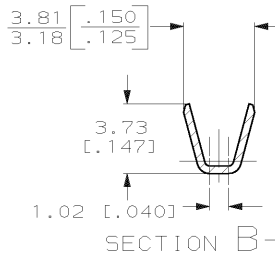
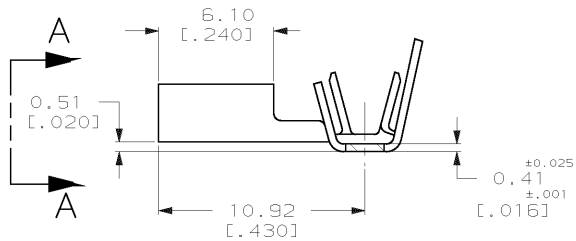


1 CONTINUOUS STRIP ON REELS.



FITS 6.35 [0.250] SERIES FASTON TAB

VIEW A-A



TIN	2.79-4.06 [0.110-0.160] DIA	0.8-2.0mm ² [18-14] AWG	0.81 [0.032]	63011-2 63011-1
FINISH	INSUL RANGE	WIRE SIZE	MATING TAB THK #0.025 [0.001]	PART NO
DO NOT SCALE PRINT. UNLESS SPECIFIED DIMENSIONS IN mm [INCHES] TOLERANCES ON: 2. PLC DEC ± 3. PLC DEC ± 0.38 [0.015] ANGLES # -		DR 4/8/91 JK RUTH CHK 4/8/91 MS FEHER APPD 4/8/91 C MEYERS APPD 4/8/91 R KUZO	AMP Incorporated Harrisburg, PA 17105-3608 NAME RECEPTACLE, FASTON, FLAG, 6.35 [0.250] SERIES	
MATERIAL	4M BRASS	PRODUCT SPEC	SIZE	CAGE CODE
FINISH	SEE TABLE	APPLICATION SPEC	B	00779
		WEIGHT	SCALE	DRAWING NO
			5:1	63011
				SHEET
				1 OF 1

METRIC

AMP 1470-15 REV 11-89
14-JUL-97 07:52:23 amp13469 /usr/dsp12121/dsp12121/u.Faston-prc/au.250-FL

CUSTOMER DRAWING