

4

3

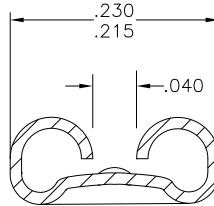
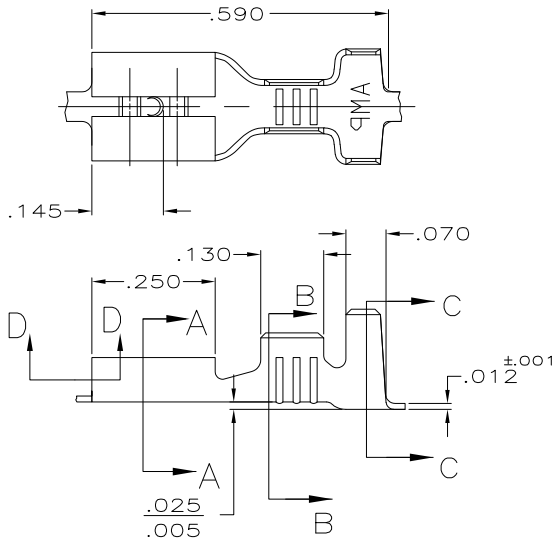
2

1

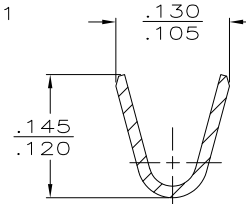
THIS DRAWING IS UNPUBLISHED. RELEASED FOR PUBLICATION
 © COPYRIGHT - BY TYCO ELECTRONICS CORPORATION. ALL INTERNATIONAL RIGHTS RESERVED.

LOC	DIST	REVISIONS				
P	LTR	DESCRIPTION	DATE	DWN	APVD	
M2		REVISED PER ECR-09-009910	4/27/09	SS	PD	

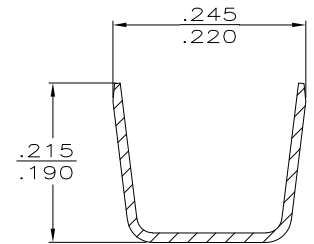
- 1 CONTINUOUS STRIP ON REELS
- 2 WIRE SIZE IS #18-#16 OR TWO #18'S.
- 3 INSULATION RANGE IS .105-.210 OR TWO AT .105 MAX.
- 4 MATING TAB THK IS .032±.001.



SECTION A-A
SCALE 8:1



SECTION B-B
SCALE 8:1



SECTION C-C
SCALE 8:1

SWAGE ON
61945-1 ONLY

SECTION D-D

.000150 MIN NICKEL	T2 STEEL	61945-2
.000080 MIN TIN	H04 BRASS	61945-1
FINISH	MATERIAL	PART NO.

F	.210	.188	F	.100	—	—
TYPE	WIDTH	STRIP LENGTH ±.015	TYPE	WIDTH	±.002 HEIGHT	WIRE
INSUL BARREL CRIMP			WIRE BARREL CRIMP			

THIS DRAWING IS A CONTROLLED DOCUMENT.

DIMENSIONS:	TOLERANCES UNLESS OTHERWISE SPECIFIED:
INCHES	
0 PLC	± -
1 PLC	± -
2 PLC	± -
3 PLC	± .015
4 PLC	± -
ANGLES	± -

MATERIAL: SEE TABLE
FINISH: SEE TABLE

DWN	JR RUTH	8/21/91	 Tyco Electronics Corporation Harrisburg, PA 17105-3608		
CHK	MS FEHER	8/21/91			
APVD	C MEYERS	8/21/91			
PRODUCT SPEC	RECEPTACLE, FASTON, .187 SERIES				
APPLICATION SPEC	-				
WEIGHT	—	SIZE	CAGE CODE	DRAWING NO	RESTRICTED TO
CUSTOMER DRAWING	A3	00779	C-61945		—
SCALE		5:1	SHEET		1 OF 1
REV		M2			