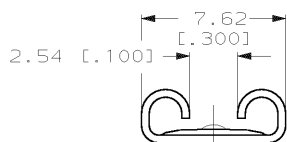
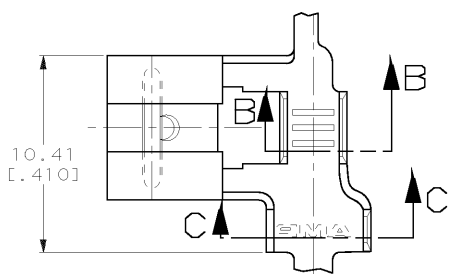


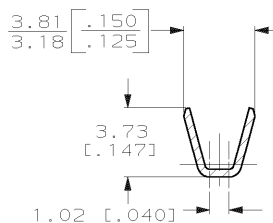
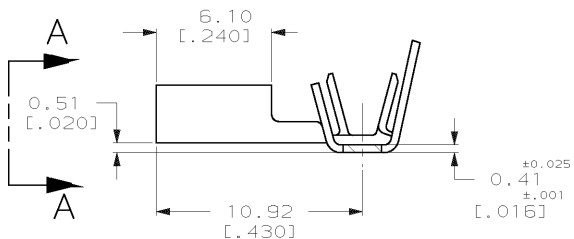
DRAWING MADE IN THIRD ANGLE PROJECTION

THIS DRAWING IS UNPUBLISHED. RELEASED FOR PUBLICATION, 19
 © COPYRIGHT 19 BY AMP INCORPORATED. ALL INTERNATIONAL RIGHTS RESERVED.

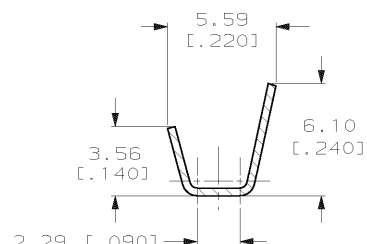
LOC	DIST	P	F	ZONE	LTR	REVISIONS	DATE	APPD
AF	50				F	ADDED -3 PER 063A-0447-00	06JUL00	JR/PD



VIEW A-A



SECTION B-B



SECTION C-C

- 1 CONTINUOUS STRIP ON REELS.
- 2 MATING TAB THK IS 0.81±0.025 [.032±.001]
- 3 WIRE SIZE IS [#18-#14] AWG.
- 4 INSULATION RANGE IS 2.79-4.06 [.110-.160] DIA.
- 5 0.00381 [.000150] MIN TIN OVER 0.00254 [.000100] MIN COPPER.
- 6 PRELIMINARY - NOT FOR PRODUCTION

TIN OVER COPPER	5	6	63009-3
0.002032 [.000080] MIN TIN			63009-2
-			63009-1
FINISH			PART NO

DO NOT SCALE PRINT. UNLESS SPECIFIED DIMENSIONS IN MM [INCHES] TOLERANCES ON: 2. PLC DEC ± 3. PLC DEC ± 0.38 (.015) ANGLES ± -	DR 4/9/91 JR RUTH CHK 4/9/91 MS FEHER APPD 4/9/91 C MEIERS APPD 4/9/91 R KUZO
MATERIAL 4M BRASS	PRODUCT SPEC -
FINISH SEE TABLE	APPLICATION SPEC -
WEIGHT	-

AMP AMP Incorporated Harrisburg, PA 17105-3608		
NAME RECEPTACLE, FASTON, FLAG, 6.35 [.250] SERIES		
SIZE B	CAGE CODE 00779	DRAWING NO 63009
SCALE 5:1	SHEET 1 OF 1	

AMP 1470-15 REV 11-89
 21 OCT 1991 09:34:48 AMP13469 40512848EPT2121-0462121-ULFASTON-CEB-U,250-FL

CUSTOMER DRAWING