

4

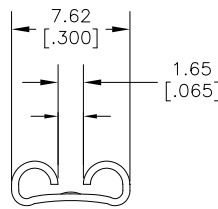
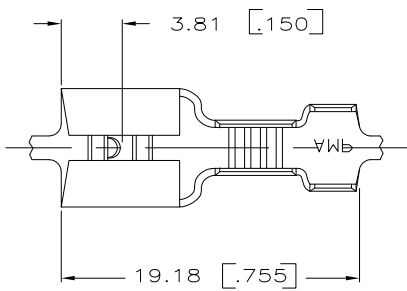
3

2

1

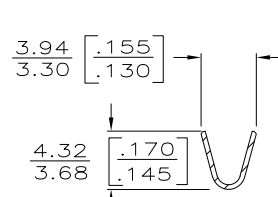
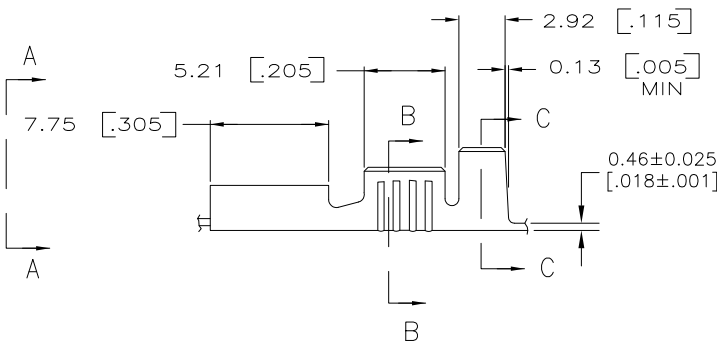
THIS DRAWING IS UNPUBLISHED. RELEASED FOR PUBLICATION
 © COPYRIGHT - By - ALL RIGHTS RESERVED.

LOC		DIST		REVISIONS			
P	LTR	DESCRIPTION	DATE	DWN	APVD		
T1		REVISED PER ECO-11-004587	11MAR11	RK	HMR		

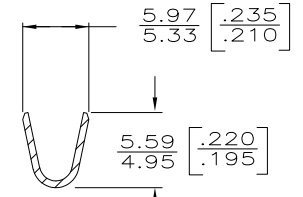


VIEW A-A

- 1 DIM'S IN BRACKETS ARE IN INCHES
 - 2 CONTINUOUS STRIP ON REELS
 - 3 WIRE SIZE 0.8-2.0mm [#18-#14] AWG
 - 4 INSULATION RANGE IS 3.05-4.32 [.120-.170] DIA.
 - 5 MATING TAB THK IS 0.81±0.025 [.032±.001].
- △ 0.38 X 15° [.015 X 15°] SWAGE ON FRONT OF RECEPTACLE. FOR FOREIGN PRODUCTION ONLY.



SECT B-B



SECT C-C

△ 41274-1
41274
PART NO.

TYPE	WIDTH	STRIP LENGTH	TYPE	WIDTH	HEIGHT	WIRE
F OR O	4.57 [.180]	6.4 [.252]	F	3.05 [.120]	1.90 [.075]	2.0w [.14]
					1.68 [.066]	1.3w [.16]
					1.55 [.06]	0.8w [.18]
INSUL BARREL CRIMP		±.015	WIRE BARREL CRIMP		±.051 [.002]	

THIS DRAWING IS A CONTROLLED DOCUMENT.

DIMENSIONS: MM [INCHES]	TOLERANCES UNLESS OTHERWISE SPECIFIED:	DWN JR RUTH 2/5/86	TE Connectivity .250 SERIES FASTON RECEPTACLE			
	0 PLC ± - 1 PLC ± - 2 PLC ± - 3 PLC ± 0.38 [.015] 4 PLC ± - ANGLES ± -	CHK G YETTER 2/5/86			NAME	
		APVD R KUZO 2/5/86			PRODUCT SPEC	
					APPLICATION SPEC	
			WEIGHT			
MATERIAL BRASS	FINISH TIN PLATED	CUSTOMER DRAWING	SIZE A3	CAGE CODE 00779	DRAWING NO C-41274	RESTRICTED TO
			SCALE 4:1	SHEET 1 OF 1	REV T1	