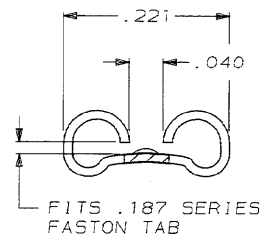
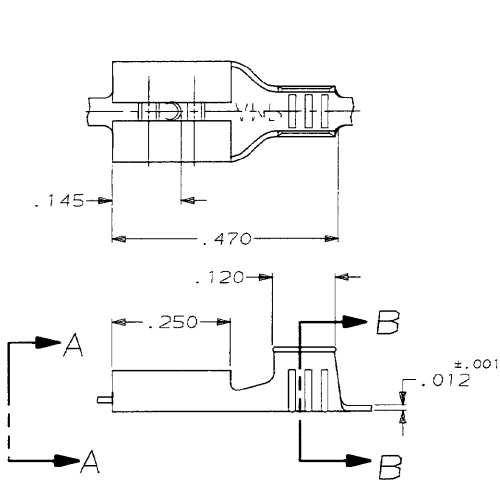


DRAWING MADE IN THIRD ANGLE PROJECTION

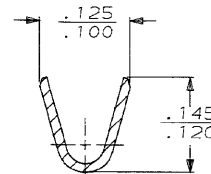
THIS DRAWING IS UNPUBLISHED. RELEASED FOR PUBLICATION . 19 .  
 © COPYRIGHT 19 BY AMP INCORPORATED. ALL INTERNATIONAL RIGHTS RESERVED.

LOC	QTY	P	F	ZONE	LTR	REVISIONS	DATE	APPD
AF	50				K	REDRAWN	7/14/89	JR/CM



VIEW A-A  
SCALE 8:1

1 CONTINUOUS STRIP ON REELS



SECTION B-B  
SCALE 8:1

OBSOLETE

NICKEL	#2H STEEL	20-16	.020	42373-3
TIN	#4H BRASS	20-16	.020	42373-2
-	#4H BRASS	20-16	.020	<del>42373-1</del>
FINISH	MATERIAL	WIRE SIZE	MATING TAB THK ±.001	PART NO

STRIP LENGTH ±.015	TYPE	WIDTH	±.002 HEIGHT	WIRE
.188	F	.090	.060	16
			.053	18
			.049	20
WIRE BARREL CRIMP				

DO NOT SCALE PRINT. UNLESS SPECIFIED DIMENSIONS IN mm (INCHES) TOLERANCES ON: 2 PLG DEC ± .015 3 PLG DEC ± .015 ANGLES ± °	DR 7/14/89 JR RUT CHK 7/14/89 MS FEHER APPD 7/14/89 C NEVEES APPD 7/14/89 R KUZO
MATERIAL	PRODUCT SPEC
FINISH	APPLICATION SPEC
SEE TABLE	SEE TABLE
WEIGHT	-

AMP INCORPORATED Harrisburg, Pa. 17105		
RECEPTACLE, FASTON™ .187 SERIES		
SIZE	CAGE CODE	DRAWING NO
B	00779	42373
SCALE 5:1	SHEET	1 OF 1

AMP 1470-15 REV 6-89  
 14 JUL 1989 09:24:15 013460 051284-DEPT2124-02621240 FAX150-AMKJ 187-578

CUSTOMER DRAWING