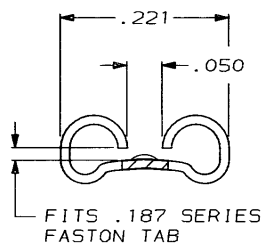
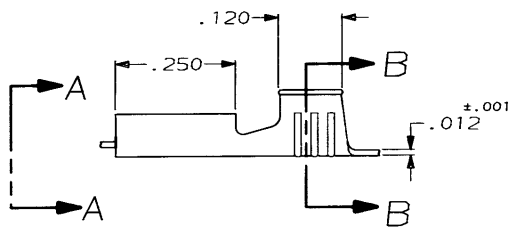
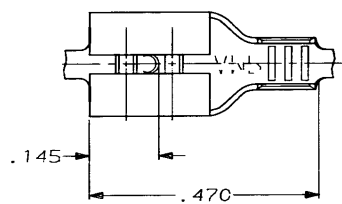


DRAWING MADE IN THIRD ANGLE PROJECTION

THIS DRAWING IS UNPUBLISHED. RELEASED FOR PUBLICATION .19
 © COPYRIGHT 19 BY AMP INCORPORATED. ALL INTERNATIONAL RIGHTS RESERVED.

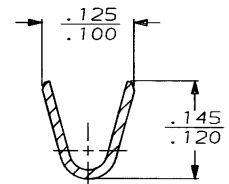
LOC	DIST	P	F	ZONE	LTR	REVISIONS	DATE	APPD
AF	50				K	REDRAWN & SEP FROM 42373	7/14/89	JR/CM



FITS .187 SERIES FASTON TAB

VIEW A-A
SCALE 8:1

1 CONTINUOUS STRIP ON REELS



SECTION B-B
SCALE 8:1

OBsolete	TIN	#4H BRASS	20-16	.015	42374-2
	-	#4H BRASS	20-16	.015	42374-1
	FINISH	MATERIAL	WIRE SIZE	MATING TAB THK ±.001	PART NO

STRIP LENGTH ±.015	TYPE	WIDTH	±.002 HEIGHT	WIRE
.188	F	.090	.060	16
			.053	18
			.049	20

WIRE BARREL CRIMP

DO NOT SCALE PRINT. UNLESS SPECIFIED	DR 7/14/89
DIMENSIONS IN INCHES	JR RUTH
TOLERANCES ON:	CHK 7/14/89
2 PLC DEC ± .015	NS FEUER
3 PLC DEC ± .015	APPD 7/14/89
ANGLES ±	C NEVERS
MATERIAL	APPD 7/14/89
SEE TABLE	P KULL
FINISH	PRODUCT SPEC
SEE TABLE	APPLICATION SPEC
	WEIGHT -

AMP AMP INCORPORATED Harrisburg, Pa. 17105		
RECEPTACLE, FASTON™ .187 SERIES		
SIZE	CAGE CODE	DRAWING NO
B	00779	42374
SCALE	5:1	SHEET
		1 OF 1

AMP 1470-15 REV 6-89

CUSTOMER DRAWING