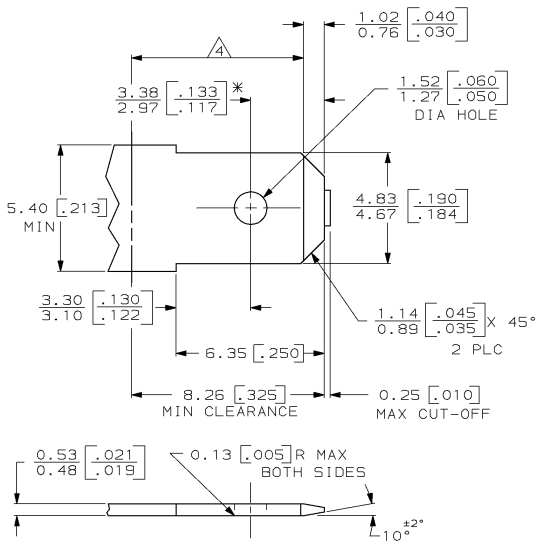


DRAWING MADE IN THIRD ANGLE PROJECTION

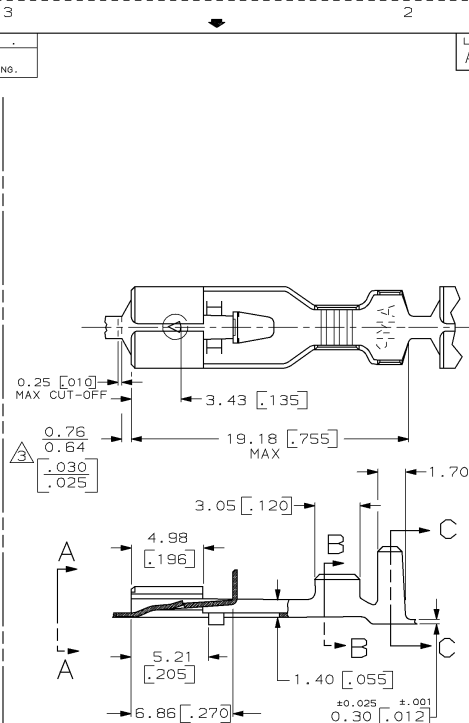
THIS DRAWING IS UNPUBLISHED. RELEASED FOR PUBLICATION .19
 © COPYRIGHT 19 BY AMP INCORPORATED, HARRISBURG, PA. ALL INTERNATIONAL RIGHTS RESERVED. AMP PRODUCTS MAY BE COVERED BY U.S. AND FOREIGN PATENTS AND/OR PATENTS PENDING.

LOC		DIST		P		F		ZONE		LTR		REVISIONS			
AF	50											DESCRIPTION	DATE	APPROVED	
												M	ADDED -2 PER 061A-0246-98	8/10/88	JR/JG

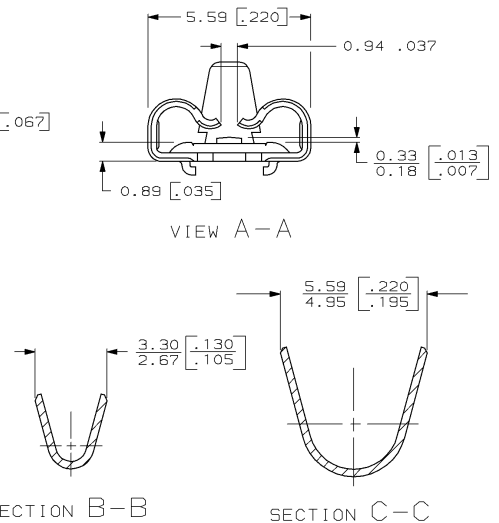
SUGGESTED MATING TAB



- 1 MATL: #2 HARD BRASS OR NICKEL PLATE STEEL.
 - 2 NO BURRS PERMISSIBLE AT HOLE.
 - 3 TIN PLATING IS REQUIRED ON BRASS WHEN TERMINAL TEMPURTURE IS OVER 225°F.
 - 4 Δ MUST BE FLAT WITHIN 0.076 [0.003] OVER THIS LENGTH.
 - 5 HOLE MUST BE SYMMETRICAL ABOUT TAB ϕ WITHIN 0.076 [0.003].
- * TO BE USED ONLY WHEN SHOULDER IS ELIMINATED.



- 1 DIMENSIONS IN BRACKETS ARE IN INCHES.
- 2 CONTINUOUS STRIP ON REELS.
- 3 Δ THE 0.76 [0.30] [0.64 [0.025]] DIMENSION MUST BE MAINTAINED BY THE APPLICATOR CUT-OFF TO ENSURE THE PROPER LOCKING FUNCTION OF THE RECEPTACLE.
- 4 WIRE SIZES #20-#16, INSULATION RANGE IS 2.29-3.30 [0.090-.130] DIA.



METRIC

UNLESS OTHERWISE SPECIFIED DIMENSIONS ARE IN MM		DR 2/28/87 JR RUTH		63195-2	
TOLERANCES ON :		CHK 3/9/87 G YETTER		TIN 63195-1	
2 PL DEC ± -		APPD 3/9/87 J GILLESPIE		FINISH PART NO	
3 PL DEC ± 0.25 [0.010]		MATERIAL #GH BRASS		AMP INCORPORATED Harrisburg, Pa. 17105	
ANGLES ± -		FINISH SEE TABLE		NAME RECEPTACLE, POSITIVE LOCK, .187 SERIES	
		WEIGHT -		SIZE C	
				FSCM NO 00779	
				DRAWING NO 63195	
				SCALE NTS	
				SHEET 1 OF 1	

AMP 1471-7 REV 10-84

CUSTOMER DRAWING