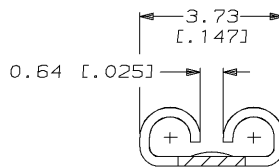
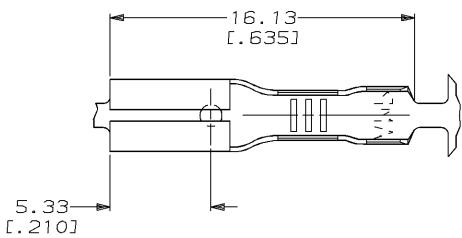


DRAWING MADE IN THIRD ANGLE PROJECTION

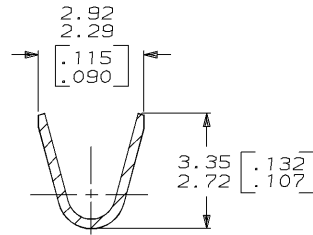
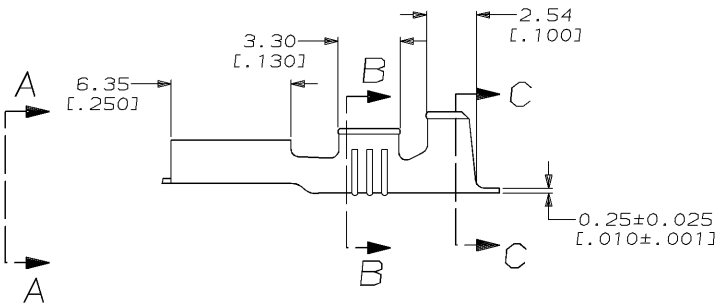
THIS DRAWING IS UNPUBLISHED. RELEASED FOR PUBLICATION, 19 .
 © COPYRIGHT 19 BY AMP INCORPORATED. ALL INTERNATIONAL RIGHTS RESERVED.

LOC	DIST	REVISIONS				
P	F	ZONE	LTR	DESCRIPTION	DATE	APPD
AF	50		B	REDRAWN PER 0710-0027-96	2/7/96	JR/PD

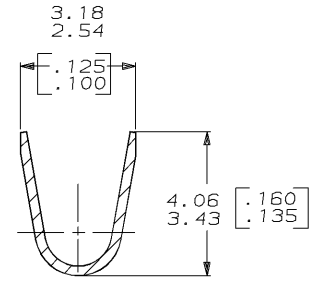
- 1 CONTINUOUS STRIP ON REELS.
- 2 WIRE SIZE [#20-#16] AWG.
- 3 INSULATION RANGE 1.52-2.54 [.060-.100] DIA.
- 4 MATING TAB THK 0.51±0.025 [.020±.001].



VIEW A-A
SCALE 10:1



SECTION B-B
SCALE 10:1



SECTION C-C
SCALE 10:1

61408-1

PART NO

DO NOT SCALE PRINT. UNLESS SPECIFIED DIMENSIONS IN mm [INCHES] TOLERANCES ON: 2 PLC DEC ± 0.38 (.015) 3 PLC DEC ± - ANGLES ± -		DR 2/7/96 JR RUTH	AMP AMP Incorporated Harrisburg, PA 17105-3608	NAME RECEPTACLE, FASTON, 2.79 [.110] SERIES
MATERIAL H04 BRASS		CHK 2/7/96 NS FEHER		
FINISH PRE-TIN		APPD 2/7/96 P DESANTIS	SIZE B	CAGE CODE 00779
THIS DRAWING IS A CONTROLLED DOCUMENT FOR AMP INCORPORATED. IT IS SUBJECT TO CHANGE AND THE CONTROLLING ENGINEERING ORGANIZATION SHOULD BE CONTACTED FOR THE LATEST REVISION.		PRODUCT SPEC -	DRAWING NO C=61408	SHEET 1 OF 1
		APPLICATION SPEC -	SCALE 5:1	
		WEIGHT -		

AMP 1470-15 REV 3-92

09-OCT-95 12:26:24 amp13469 /ws/dept2121/dwg2121/u.faston-prem/u.110-str

CUSTOMER DRAWING