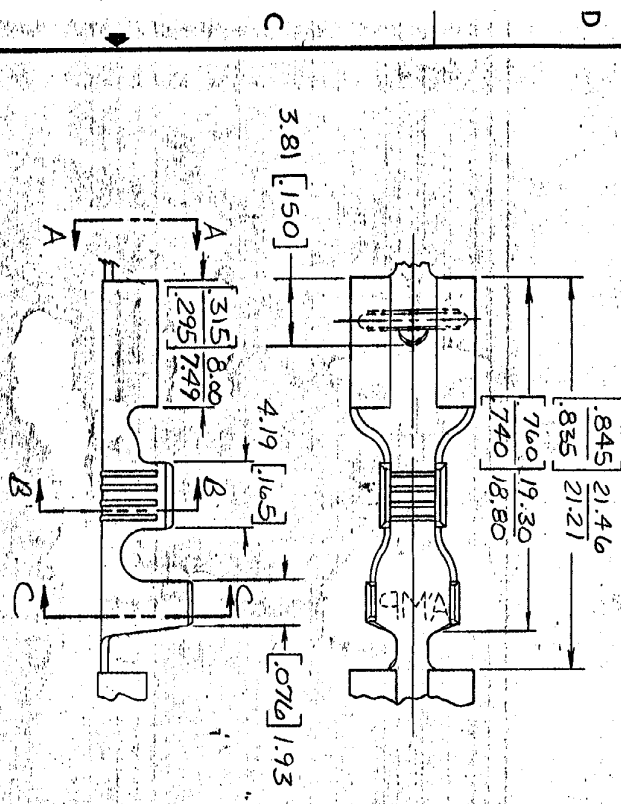
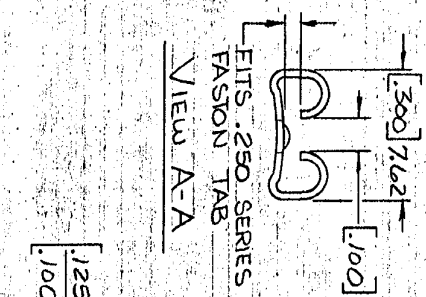


DRAWING MADE IN THIRD ANGLE PROJECTION  
 THIS DRAWING IS UNPUBLISHED. RELEASED FOR PUBLICATION  
 © COPYRIGHT 19 BY AMP INCORPORATED, HARRISBURG, PA. ALL INTERNATIONAL RIGHTS RESERVED. AMP PRODUCTS MAY BE COVERED BY U.S. AND FOREIGN PATENTS AND/OR PATENTS PENDING.

| REVOLUTIONS |   | REVISIONS |                    | LOC         | DIST   |          |
|-------------|---|-----------|--------------------|-------------|--------|----------|
| P           | F | ZONE      | LTR                | DESCRIPTION | DATE   | APPROVED |
| 1           | 1 | N         | REDRAWN FROM 42510 | 10/28/83    | STG/34 |          |
| 2           | 1 | P         | OAS - 3, -4        | 12/16/83    | STG/55 |          |
|             |   | R         | REVISIONS AT-8009  | 10/19/82    | WZ     |          |



DIMENSIONS IN BRACKETS ARE IN INCHES  
 2-CONTINUOUS STRIP ON REELS



SECT. B-B

SECT. C-C

| FINISH | MATERIAL    | INSULATION RANGE | WIRE SIZE | TAG   | TRK    | PART NO. |
|--------|-------------|------------------|-----------|-------|--------|----------|
| None   | 6061041 BR. | 1090-1300        | 2-29-3-30 | 22-18 | 703-08 | 42510-1  |
| None   | 6061041 BR. | 1090-1300        | 2-29-3-30 | 22-18 | 703-08 | 42510-2  |
| None   | 6061041 BR. | 1090-1300        | 2-29-3-30 | 22-18 | 703-08 | 42510-3  |
| None   | 6061041 BR. | 1090-1300        | 2-29-3-30 | 22-18 | 703-08 | 42510-4  |

**METRIC**

UNLESS OTHERWISE SPECIFIED DIMENSIONS ARE IN INCHES. TOLERANCES ON DECIMALS ARE: .05, .03, .02, .01, .005, .0025

CONTRACT NO. **10128183**

DESIGN APPD. **APPROVED** 11-7-83

OTHER APPD.

NAME: **250 SERIES EASTON RECEPTACLE**

SIZE: **B**

SCALE: **00779**

DRAWING NO: **42510**

SHEET: **1**

CUSTOMER DRAWING