

4

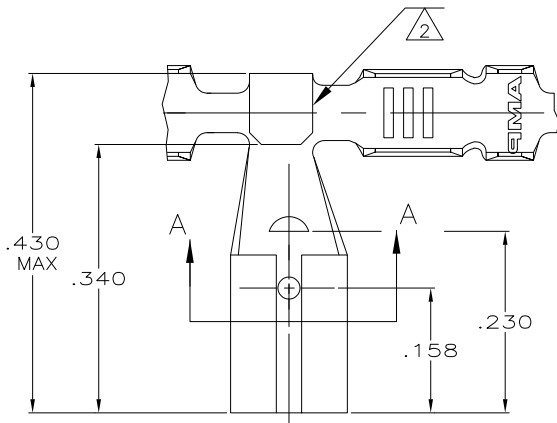
3

2

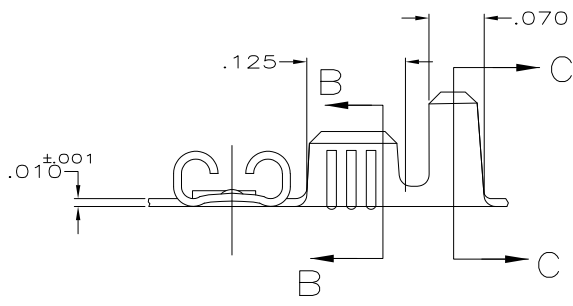
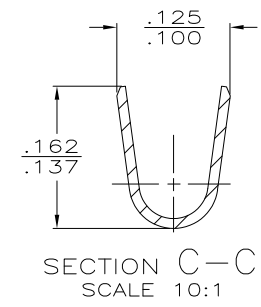
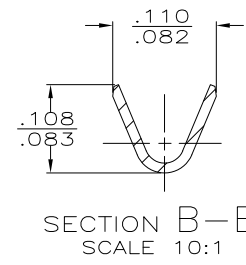
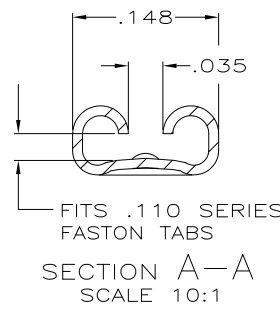
1

THIS DRAWING IS UNPUBLISHED. RELEASED FOR PUBLICATION
 © COPYRIGHT - By - ALL RIGHTS RESERVED.

LOC	DIST	REVISIONS				
P	LTR	DESCRIPTION	DATE	DWN	APVD	
AF	50					
	C2	REVISED PER ECO-11-004820	11MAR11	RK	HMR	



1 CONTINUOUS STRIP ON REELS
 2 GAP PERMISSABLE IN THIS AREA



2	NICKEL	CR STEEL	.060-.100 DIA	22-18 AWG	.032	62336-2
	PRE-TIN	H04 BRASS				62336-1
	FINISH	MATERIAL	INSULATION RANGE	WIRE SIZE	MATING TAB THK ±.001	PART NO

THIS DRAWING IS A CONTROLLED DOCUMENT.

DIMENSIONS: INCHES	TOLERANCES UNLESS OTHERWISE SPECIFIED:	DWN: JR RUTH 4/22/91	STE TE Connectivity			
		CHK: MS FEHER 4/22/91				
	0 PLC ± -	APVD: C MEYERS 4/22/91	NAME: RECEPTACLE, FASTON, FLAG, .110 SERIES			
	1 PLC ± -		PRODUCT SPEC: -			
	2 PLC ± -		APPLICATION SPEC: -			
	3 PLC ± .015		WEIGHT: -			
4 PLC ± -			SIZE: A3	CAGE CODE: 00779	DRAWING NO: 62336	RESTRICTED TO: -
MATERIAL: SEE TABLE	FINISH: SEE TABLE	CUSTOMER DRAWING		SCALE: 8:1	SHEET: 1 OF 1	REV: C2