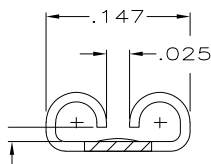
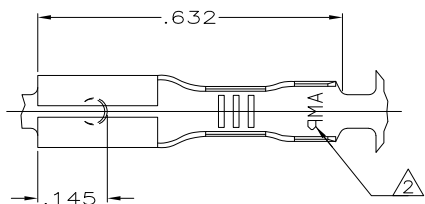


DRAWING MADE IN THIRD ANGLE PROJECTION

THIS DRAWING IS UNPUBLISHED. RELEASED FOR PUBLICATION .19  
 © COPYRIGHT 19 BY AMP INCORPORATED. ALL INTERNATIONAL RIGHTS RESERVED.

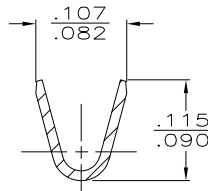
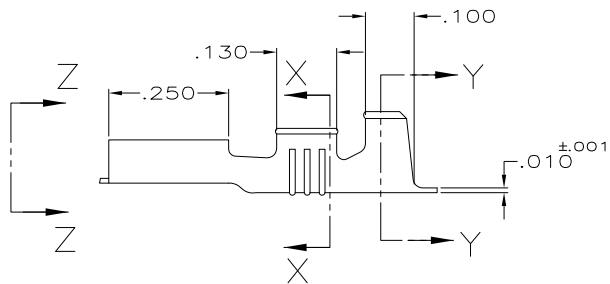
LOC		DIST		REVISIONS			
ZONE	LTR	DESCRIPTION	DATE	APPD			
AF	50	P1	REVISED PER ECO-09-020774	24AUG09	KK/AEG		



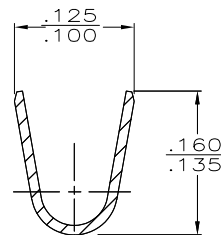
- 1 CONTINUOUS STRIP ON REELS
- 2 AMP\* FOR 42236-2 ONLY, ALL OTHERS JUST AMP.
- 3 OBSOLETE PARTS: OBSOLETE CIS STREAMLINING PER D.RENAUD/D.SINISI

FITS .110 SERIES FASTON TABS

VIEW Z-Z  
SCALE 10:1



SECTION X-X  
SCALE 10:1



SECTION Y-Y  
SCALE 10:1

3	OBSOLETE	T3 PHOS BRZ	TIN	.060-.100	22-20 AWG	.020	42236-2
		4H BRASS	PRE-TIN				42236-1
		MATERIAL	FINISH	INSUL RANGE	WIRE SIZE	MATING TAB THK ±.001	PART NO
DO NOT SCALE PRINT. UNLESS SPECIFIED DIMENSIONS ARE IN INCHES TOLERANCES ON: 2. PLC DEC ± 3. PLC DEC ± .015 ANGLES ±				DR 1/2/91 JR RUTH	AMP Incorporated Harrisburg, PA 17105-3608  NAME RECEPTACLE, FASTON, .110 SERIES		
MATERIAL SEE TABLE				CHK 1/2/91 MS FEHER			
FINISH SEE TABLE				APPD 1/2/91 C MEYERS			
				APPD 1/2/91 D REINER			
				PRODUCT SPEC	SIZE	CAGE CODE	DRAWING NO
				APPLICATION SPEC	B	00779	42236
				WEIGHT	SCALE	5:1	SHEET 1 OF 1

AMP 1470-15 REV 11-89  
 Toltec 021107.153209 (YMMDD.HHMMSS) from  
 CompServision, Inc., Medusa Revision 12.2.51

CUSTOMER DRAWING