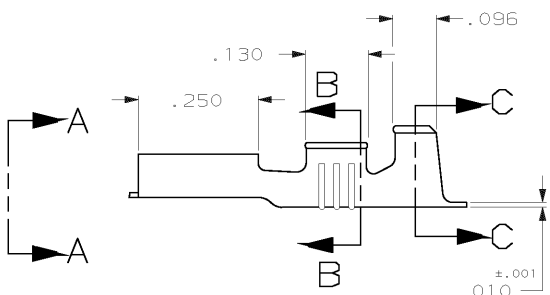
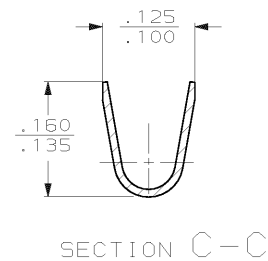
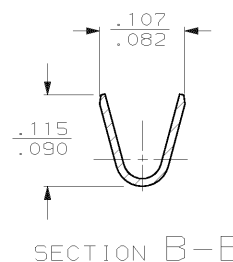
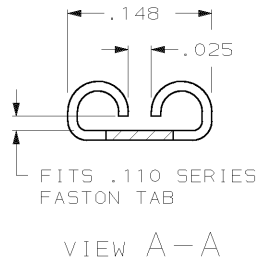
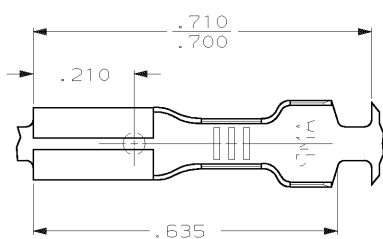


THIS DRAWING IS UNPUBLISHED. RELEASED FOR PUBLICATION, 19 .  
 © COPYRIGHT 19 BY AMP INCORPORATED. ALL INTERNATIONAL RIGHTS RESERVED.

LOC	DIST	P	F	ZONE	LTR	REVISIONS	DATE	APPD
AF	50					REL PER 063A-0517-01	245EP01	JR/PD

- 1 CONTINUOUS STRIP ON REELS.
- 2 MATING TAB THK IS .012±.001.
- 3 WIRE SIZE IS #22-#18 AWG.
- 4 INSULATION RANGE IS .060-.100 DIA
- 5 REELED ON PLASTIC REELS.



60415-2  
60415-1  
PART NO

THIS DRAWING IS A CONTROLLED DOCUMENT FOR AMP INCORPORATED. IT IS SUBJECT TO CHANGE AND THE CONTROLLING ENGINEERING ORGANIZATION SHOULD BE CONTACTED FOR THE LATEST REVISION.

DO NOT SCALE PRINT. UNLESS SPECIFIED DIMENSIONS ARE IN INCHES TOLERANCES ON: 2. PLC DEC ± .015 ANGLES # - -		DR 6/23/87 JR RUTH CHK 6/23/87 G VETTER APPD 6/23/87 C HEYERS APPD 6/23/87 R KUZO	<b>AMP</b> AMP Incorporated Harrisburg, PA 17105-3608	
MATERIAL #4H BRASS		PRODUCT SPEC -	NAME RECEPTACLE, FASTON,™ .110 SERIES	
FINISH PRE-TIN		APPLICATION SPEC -	SIZE B	CAGE CODE 00779
		WEIGHT -	DRAWING NO C=60415	SHEET 1 OF 1
			SCALE 5:1	SHEET 1 OF 1