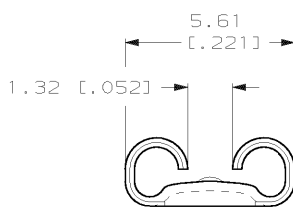
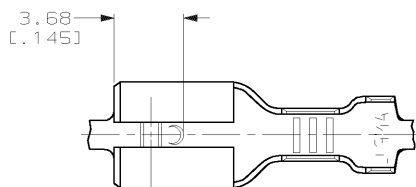


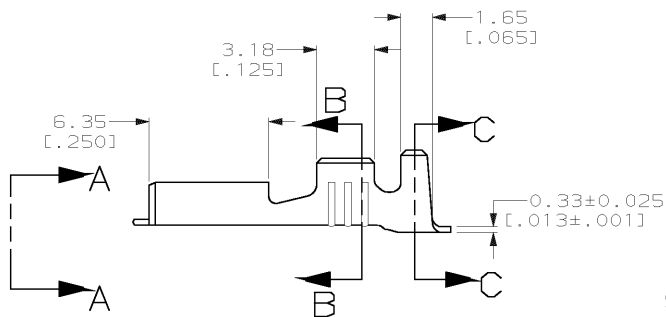
DRAWING MADE IN THIRD ANGLE PROJECTION

THIS DRAWING IS UNPUBLISHED. RELEASED FOR PUBLICATION, 19  
 © COPYRIGHT 19 BY AMP INCORPORATED. ALL INTERNATIONAL RIGHTS RESERVED.

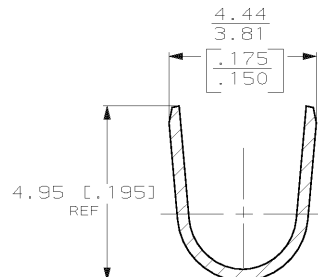
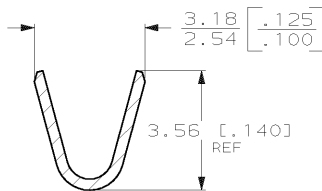
LOC	DIST	REVISIONS				DATE	APPD
P	F	ZONE	LTR	DESCRIPTION			
AF	50		F	REV PER 063A-0266-00	27APR00	JR/PD	



VIEW A-A  
SCALE 8:1



SECTION B-B  
SCALE 8:1



SECTION C-C  
SCALE 8:1

- 1 ACCEPTS WIRE SIZE [#20-#16] AWG.
- 2 INSULATION RANGE IS 2.29-3.30 [0.090-.130] DIA.
- 3 CONTINUOUS STRIP ON REELS.

0.002032 [0.00080] MIN TIN	0.508±0.025 [0.020±.001]	63475-2
FINISH	MATING TAB THICKNESS	PART NO
63475-1		
DO NOT SCALE PRINT. UNLESS SPECIFIED DIMENSIONS IN MM (INCHES) TOLERANCES ON: 2 PLC DEC ± 0.25 (.010) 3 PLC DEC ± - ANGLES ± -	DR 11/9/87 JR RUTH CHK 11/10/87 S VETTER APPD 11/10/87 C HEWERS APPD 11/10/87 R KUZO	AMP AMP Incorporated Harrisburg, PA 17105-3608
MATERIAL H04 BRASS	PRODUCT SPEC -	NAME RECEPTACLE, LIF, FASTON, 4.75 [0.187] SERIES
FINISH SEE TABLE	APPLICATION SPEC -	SIZE B CAGE CODE 00779 DRAWING NO C=63475
	WEIGHT -	SCALE 5:1 SHEET 1 OF 1

THIS DRAWING IS A CONTROLLED DOCUMENT FOR AMP INCORPORATED. IT IS SUBJECT TO CHANGE AND THE CONTROLLING ENGINEERING ORGANIZATION SHOULD BE CONTACTED FOR THE LATEST REVISION.