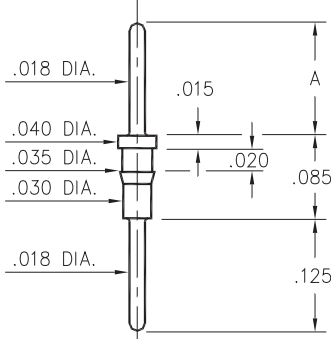


### 8685/9036

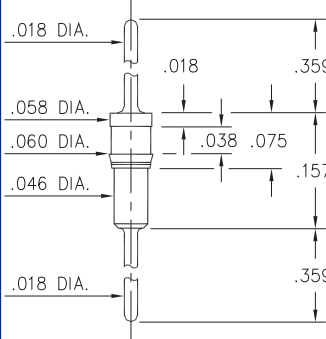


Basic Part Number	Length A
8685-0	.125
9036-0	.175

**XXXX-0-00-XX-00-00-03-0**

Press-fit in .033 mounting hole.  
Pin material is Ph. Br. 544 (B2)

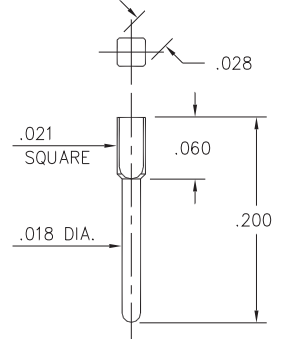
### 9051



**9051-0-00-XX-00-00-03-0**

Press-fit in .057 mounting hole

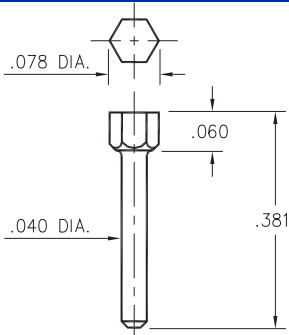
### 8969



**8969-0-05-XX-00-00-03-0**

Square press-fit in .023 plated thru hole (use .7 mm drill prior to plating)

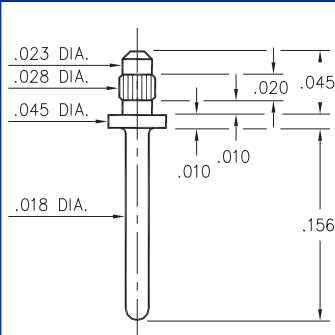
### 8979



**8979-0-00-XX-00-00-03-0**

Hex press-fit in .074 plated thru hole

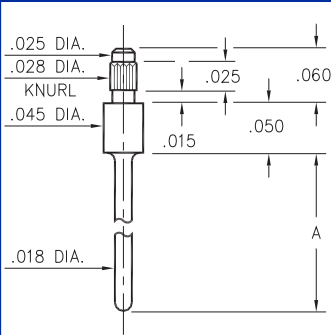
### 9159



**9159-0-00-XX-00-00-03-0**

Press-fit in .026 mounting hole

### 3155/5155

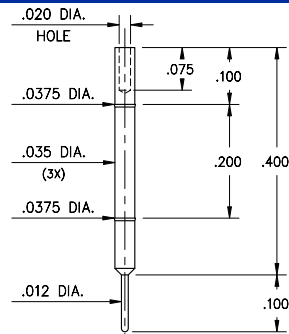


**X155-0-00-XX-00-00-03-0**

Press-fit in .026 mounting hole  
Pin material is Ph. Br. 544 (B2)

Basic Part Number	Length A
3155-0	.180
5155-0	.130

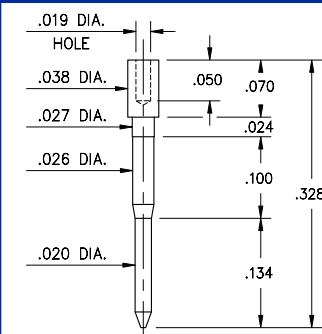
### 4194



**4194-0-00-XX-00-00-08-0**

Wire termination and Press-fit in .036 hole

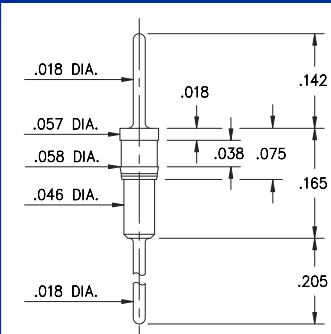
### 5556



**5556-0-00-XX-00-00-38-0**

Wire termination

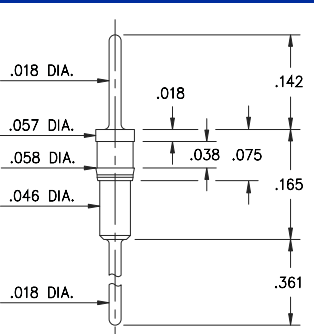
### 3790



**3790-0-00-XX-00-00-03-0**

Press-fit in .057 mounting hole

### 3796



**3796-0-00-XX-00-00-03-0**

Press-fit in .057 mounting hole

## SPECIFICATIONS

**PIN MATERIAL:**  
Brass Alloy 360, 1/2 Hard  
(Except where noted)

**DIMENSION IN INCHES**  
**TOLERANCES ON:**  
LENGTHS: ±.005  
DIAMETERS: ±.002  
ANGLES: ± 2°

**ORDER CODE: XXXX - X - 0X - XX - 00 - 00 - XX - 0**

**BASIC PART #**

**SPECIFY PIN FINISH:**

- 01 200µ" TIN/LEAD OVER NICKEL
- ◇ 80 200µ" TIN OVER NICKEL (RoHS)
- ◇ 15 10µ" GOLD OVER NICKEL (RoHS)
- ◇ 21 20µ" GOLD OVER NICKEL (RoHS)
- ◇ 34 50µ" GOLD OVER NICKEL (RoHS)

