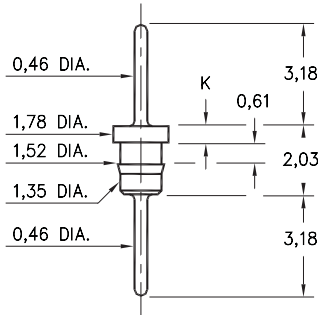


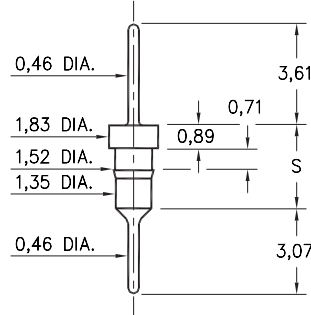
1752/6458



Basic Part Number	Length K
1752-0	0,51
6458-0	0,89

XXXX-0-00-XX-00-00-03-0
Press-fit in 1,45 mounting hole

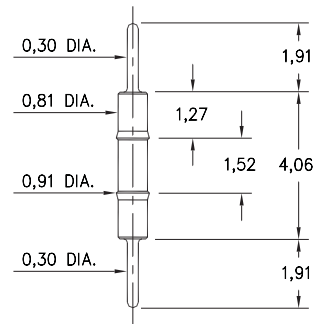
3413/8404



Basic Part Number	Length S
3413-0	3,0
8404-0	3,33

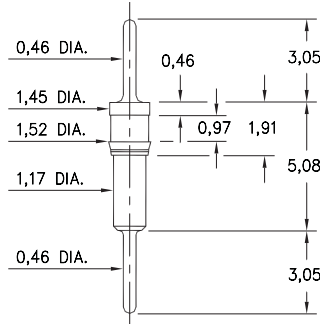
X4XX-0-00-XX-00-00-03-0
Press-fit in 1,45 mounting hole

9075



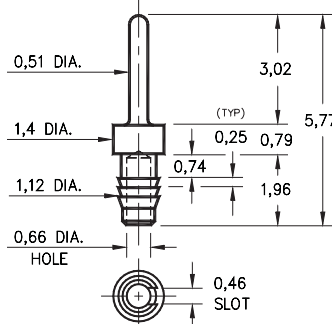
9075-0-00-XX-00-00-03-0
Press-fit in 0,86 mounting hole

9218



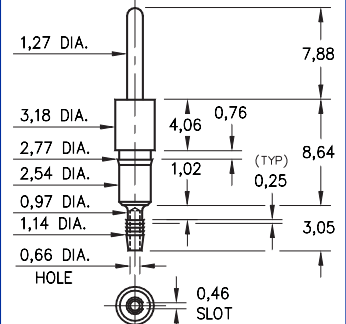
9218-0-00-XX-00-00-03-0
Press-fit in 1,45 mounting hole

2617



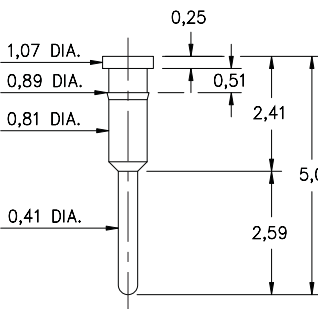
2617-0-01-XX-00-00-03-0
Compliant press-fit in 1,02 ±0,08 hole. For 1,52 → 2,54 thick board

8995



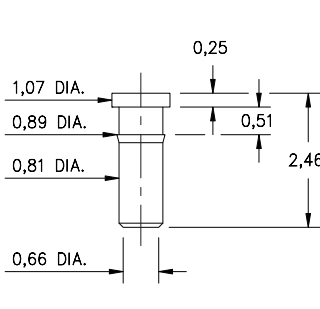
8995-0-01-XX-00-00-03-0
Compliant press-fit in 1,02 ±0,08 hole. For 1,52 → 2,54 thick board

1933



1933-0-00-XX-00-00-03-0
Press-fit in 0,86 mounting hole

1935



1935-0-00-XX-00-00-03-0
Press-fit in 0,86 mounting hole

SPECIFICATIONS

PIN MATERIAL:
Brass Alloy 360, 1/2 Hard
(Except where noted)

DIMENSION IN INCHES TOLERANCES ON:
LENGTHS: ±0,13
DIAMETERS: ±0,05
ANGLES: ± 2°

ORDER CODE: XXXX - X - 0X - XX - 00 - 00 - 03 - 0

BASIC PART #

SPECIFY PIN FINISH:

- 01 5,08µm TIN/LEAD OVER NICKEL
- ◇ 80 5,08µm TIN OVER NICKEL (RoHS)
- ◇ 15 0,25µm GOLD OVER NICKEL (RoHS)
- ◇ 21 0,51µm GOLD OVER NICKEL (RoHS)
- ◇ 34 1,27µm GOLD OVER NICKEL (RoHS)

