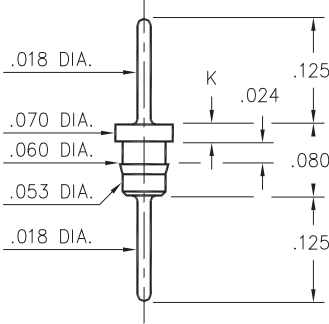


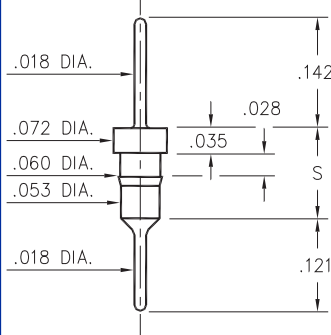
1752/6458



Basic Part Number	Length K
1752-0	.020
6458-0	.035

XXXX-0-00-XX-00-00-03-0
Press-fit in .057 mounting hole

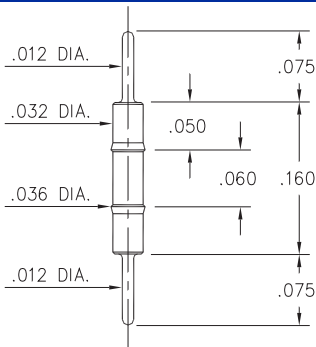
3413/8404



Basic Part Number	Length S
3413-0	.118
8404-0	.131

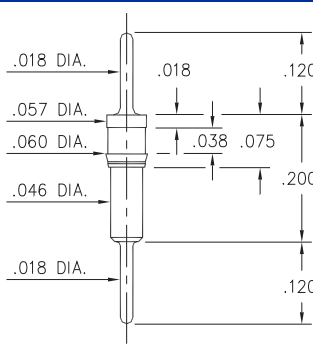
X4XX-0-00-XX-00-00-03-0
Press-fit in .057 mounting hole

9075



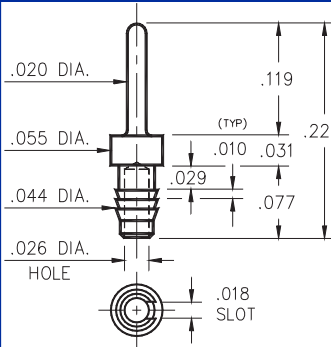
9075-0-00-XX-00-00-03-0
Press-fit in .034 mounting hole

9218



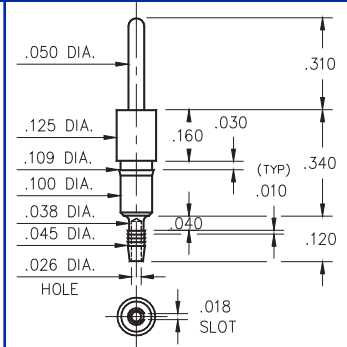
9218-0-00-XX-00-00-03-0
Press-fit in .057 mounting hole

2617



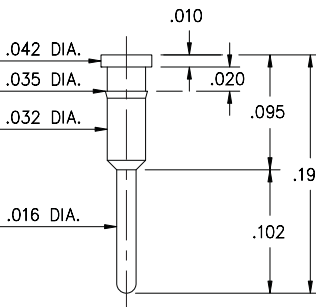
2617-0-01-XX-00-00-03-0
Compliant press-fit in .040 ±.003 hole. For .060 → .100 thick board

8995



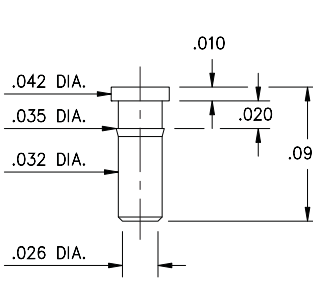
8995-0-01-XX-00-00-03-0
Compliant press-fit in .040 ±.003 hole. For .060 → .100 thick board

1933



1933-0-00-XX-00-00-03-0
Press-fit in .034 mounting hole

1935



1935-0-00-XX-00-00-03-0
Press-fit in .034 mounting hole

SPECIFICATIONS

PIN MATERIAL:
Brass Alloy 360, 1/2 Hard
(Except where noted)

DIMENSION IN INCHES
TOLERANCES ON:
LENGTHS: ±.005
DIAMETERS: ±.002
ANGLES: ± 2°

ORDER CODE: XXXX - X - 0X - XX - 00 - 00 - 03 - 0

BASIC PART #

SPECIFY PIN FINISH:

- 01 200µ" TIN/LEAD OVER NICKEL
- ◇ 80 200µ" TIN OVER NICKEL (RoHS)
- ◇ 15 10µ" GOLD OVER NICKEL (RoHS)
- ◇ 21 20µ" GOLD OVER NICKEL (RoHS)
- ◇ 34 50µ" GOLD OVER NICKEL (RoHS)

