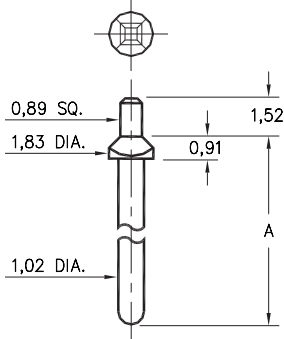


8600/8954/8955

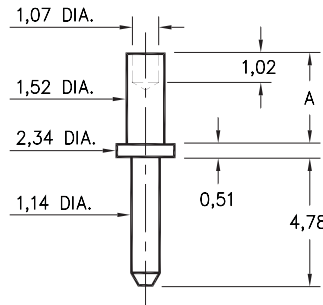


Basic Part Number	Pin Length A
8600-0	10,16
8600-1	21,59
8600-2	30,48
8954-0	3,45
8955-0	16,64

8XXX-X-05-XX-00-00-03-0

Square press-fit in 1,09 plated thru hole

3159

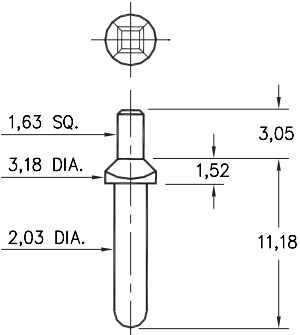


Basic Part Number	Board Thickness	Length V
3159-1	0,79	1,57
3159-2	1,57	2,39
3159-3	2,39	3,18
3159-4	3,18	3,96

3159-X-00-XX-00-00-08-0

Swage mount in 1,63 hole

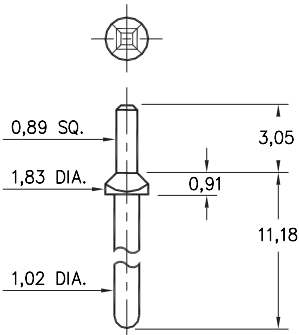
8952



8952-0-05-XX-00-00-03-0

Square press-fit in 2,21 plated thru hole

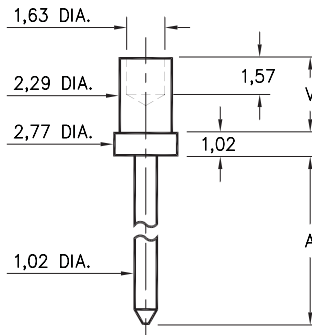
8953



8953-0-05-XX-00-00-03-0

Square press-fit in 1,19 plated thru hole

3230

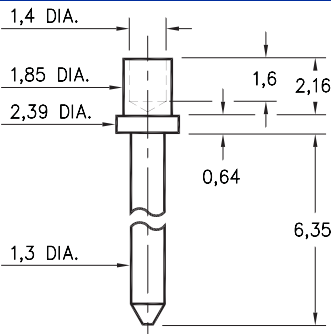


Basic Part Number	Board Thickness	Length A	Length V
3230-1	0,79	5,13	1,65
3230-2	1,57	5,79	2,41
3230-3	2,39	6,55	3,18
3230-4	3,18	7,32	3,94

3230-X-00-XX-00-00-08-0

Swage mount in 2,39 hole

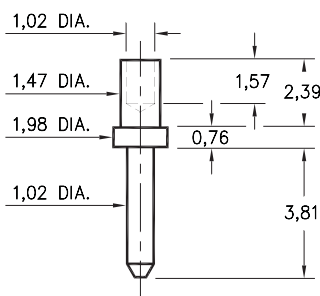
3146



3146-2-00-XX-00-00-08-0

Swage mount in 1,93 hole.
For 1,57 thick board

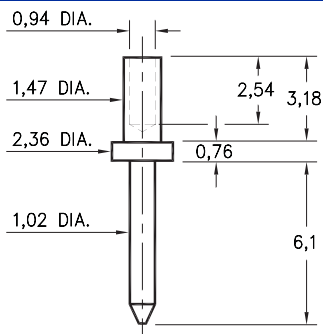
3142



3142-2-00-XX-00-00-08-0

Swage mount in 1,57 hole.
For 1,57 thick board

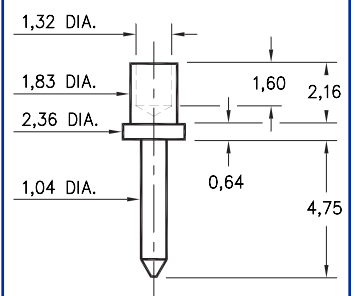
3232



3232-3-00-XX-00-00-08-0

Swage mount in 1,57 hole.
For 2,39 thick board

3145



3145-2-00-XX-00-00-08-0

Swage mount in 1,93 hole.
For 1,57 thick board

SPECIFICATIONS

PIN MATERIAL:
Brass Alloy 360, 1/2 Hard
(Except Swage pins which are annealed)

DIMENSION IN INCHES
TOLERANCES ON:
LENGTHS: ±0,13
DIAMETERS: ±0,05
ANGLES: ± 2°

ORDER CODE: XXXX - X - 0X - XX - 00 - 00 - XX - 0

BASIC PART #

SPECIFY PIN FINISH:

- 01 5,08µm TIN/LEAD OVER NICKEL
- ◇ 80 5,08µm TIN OVER NICKEL (RoHS)
- ◇ 15 0,25µm GOLD OVER NICKEL (RoHS)
- ◇ 21 0,51µm GOLD OVER NICKEL (RoHS)
- ◇ 34 1,27µm GOLD OVER NICKEL (RoHS)

