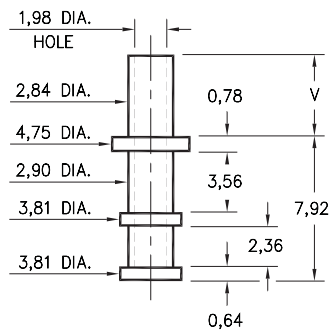
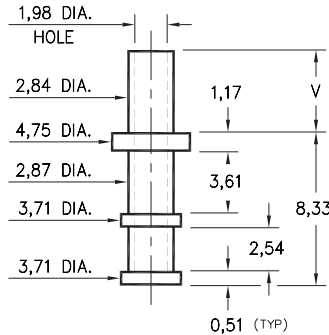


2802/2804



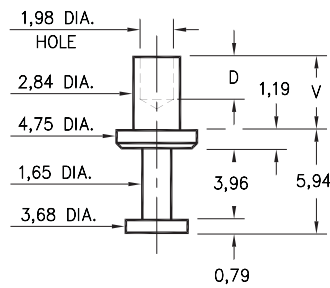
2802-X-00-XX-00-00-07-0
Swage mount in 3,0 hole



2804-X-00-XX-00-00-07-0
Swage mount in 3,0 hole

- X -	Board Thickness	Length V
1	0,79	1,98
2	1,57	2,77
3	2,39	3,56
4	3,18	4,34

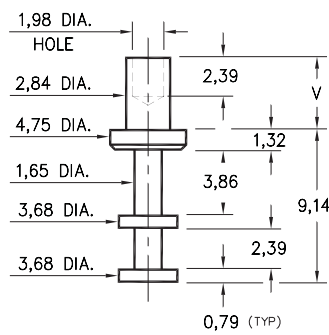
2805



2805-X-00-XX-00-00-07-0
Swage mount in 2,95 hole

- X -	Board Thickness	Length V	Depth D
1	0,79	1,88	1,73
2	1,57	2,67	2,49
3	2,39	3,43	
4	3,18	4,19	

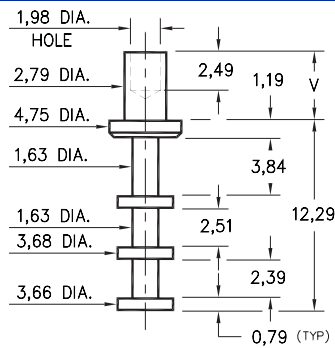
2801



2801-X-00-XX-00-00-07-0
Swage mount in 2,95 hole

- X -	Board Thickness	Length V
1	0,79	1,98
2	1,57	2,77
3	2,39	3,58
4	3,18	4,37
5	4,76	5,94

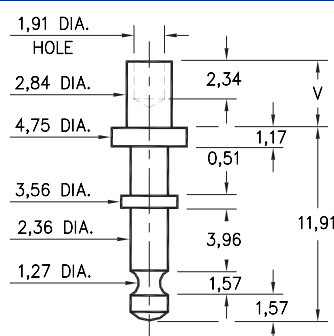
2806



2806-X-00-XX-00-00-07-0
Swage mount in 2,95 hole

- X -	Board Thickness	Length V
1	0,79	1,98
2	1,57	2,77
3	2,39	3,58
4	3,18	4,37

2811



2811-X-00-XX-00-00-07-0
Swage mount in 2,95 hole

- X -	Board Thickness	Length V
1	0,79	1,91
2	1,57	2,67
3	2,39	3,43
4	3,18	4,19

SPECIFICATIONS

PIN MATERIAL:
Brass Alloy 360, 1/2 Hard
Swage pins are annealed

DIMENSION IN INCHES
TOLERANCES ON:
LENGTHS: ±0,13
DIAMETERS: ±0,05
ANGLES: ± 2°

ORDER CODE: XXXX - X - 00 - XX - 00 - 00 - 07 - 0

BASIC PART #

SPECIFY PIN FINISH:

- 01 5,08µm TIN/LEAD OVER NICKEL
- ◇ 80 5,08µm TIN OVER NICKEL (RoHS)
- ◇ 44 7,62µm SILVER OVER COPPER (RoHS)
- ◇ 50 7,62µm ELECTRO-SOLDER (RoHS) (60/40 SnPb)

