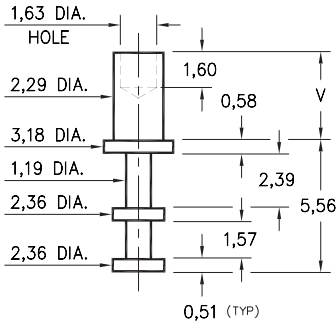


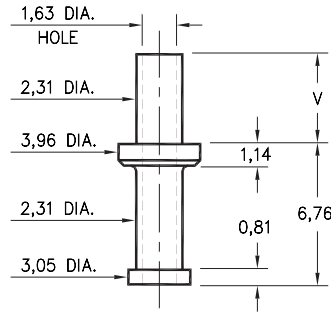
## 2501



- X -	Board Thickness	Length V
1	0,79	1,98
2	1,57	2,77
3	2,39	3,56
4	3,18	4,34

**2501-X-00-XX-00-00-07-0**  
Swage mount in 2,39 hole

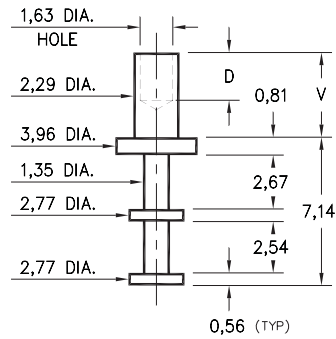
## 2703



- X -	Board Thickness	Length V
1	0,79	1,96
2	1,57	2,72
3	2,39	3,48
4	3,18	4,24

**2703-X-00-XX-00-00-07-0**  
Swage mount in 2,39 hole

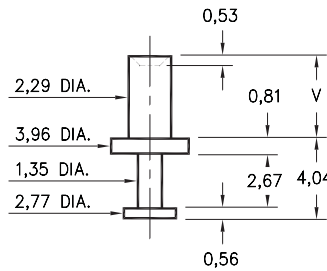
## 2702



- X -	Board Thickness	Length V	Depth D
1	0,79	1,91	1,60
2	1,57	2,67	2,36
3	2,39	3,43	
4	3,18	4,19	

**2702-X-00-XX-00-00-07-0**  
Swage mount in 2,39 hole

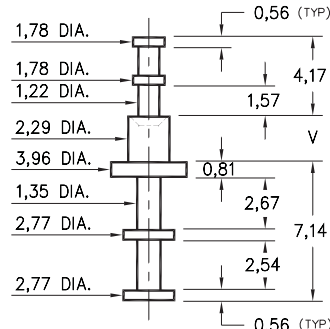
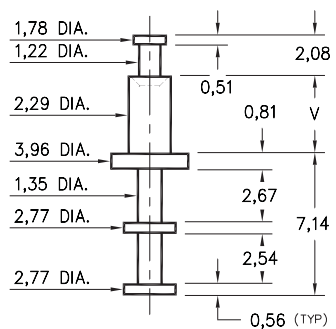
## 2710



- X -	Board Thickness	Length V
1	0,79	1,57
2	1,57	2,39
3	2,39	3,18
4	3,18	3,96

**2710-X-00-XX-00-00-07-0**  
Swage mount in 2,39 hole

## 2717/2713



- X -	Board Thickness	Length V
1	0,79	1,57
2	1,57	2,39
3	2,39	3,18
4	3,18	3,96

**2717-X-00-XX-00-00-07-0**  
Swage mount in 2,39 hole

**2713-X-00-XX-00-00-07-0**  
Swage mount in 2,39 hole

### SPECIFICATIONS

**PIN MATERIAL:**  
Brass Alloy 360, 1/2 Hard  
Swage pins are annealed

**DIMENSION IN INCHES**  
**TOLERANCES ON:**  
LENGTHS: ±0,13  
DIAMETERS: ±0,05  
ANGLES: ± 2°

**ORDER CODE: XXXX - X - 00 - XX - 00 - 00 - 07 - 0**

**BASIC PART #**

**SPECIFY PIN FINISH:**

- 01 5,08µm TIN/LEAD OVER NICKEL
- ◇ 80 5,08µm TIN OVER NICKEL (RoHS)
- ◇ 44 7,62µm SILVER OVER COPPER (RoHS)
- ◇ 50 7,62µm ELECTRO-SOLDER (RoHS) (60/40 SnPb)

