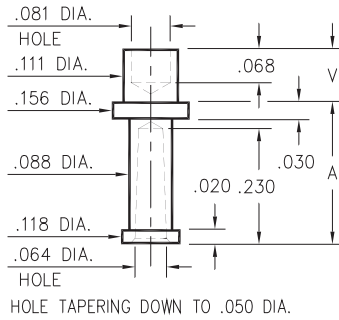


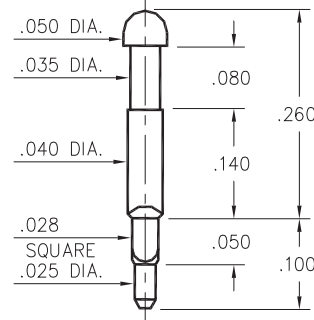
2709



- X -	Board Thickness	Length V	Length A
2	.062	.109	.281
3	.094	.141	.250

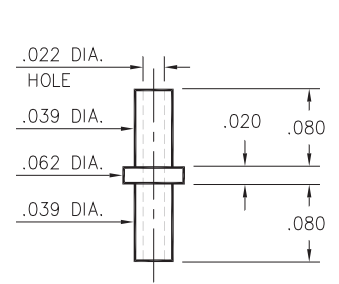
2709-X-07-XX-00-00-07-0
Swage mount in .116 hole

8602



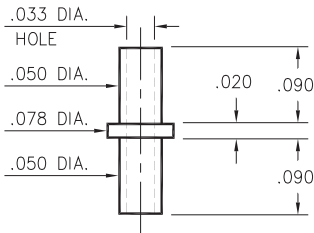
8602-1-00-XX-00-00-07-0
Square press-fit in .032 plated thru hole

2115



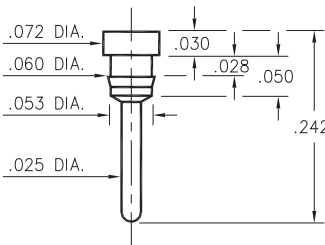
2115-2-00-XX-00-00-07-0
Swage mount in .043 hole
For .062 thick board

2326



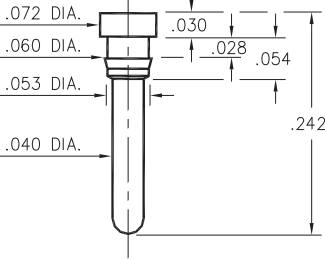
2326-2-00-XX-00-00-07-0
Swage mount in .055 hole
for .062 thick board

8831



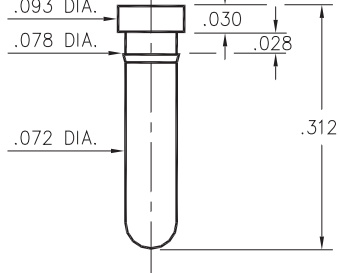
8831-0-00-XX-00-00-03-0
Press-fit in .057 mounting hole

8835



8835-0-00-XX-00-00-03-0
Press-fit in .057 mounting hole

8836



8836-0-00-XX-00-00-03-0
Press-fit in .075 mounting hole

SPECIFICATIONS

PIN MATERIAL:
Brass Alloy 360, 1/2 Hard
Swage pins are annealed

DIMENSION IN INCHES
TOLERANCES ON:
LENGTHS: ±.005
DIAMETERS: ±.002
ANGLES: ± 2°

ORDER CODE: XXXX - X - XX - XX - 00 - 00 - XX - 0

BASIC PART #

SPECIFY PIN FINISH:

- 01 200μ" TIN/LEAD OVER NICKEL
- ◇ 80 200μ" TIN OVER NICKEL (RoHS)
- ◇ 44 300μ" SILVER OVER COPPER (RoHS)
- ◇ 50 300μ" ELECTRO-SOLDER (RoHS) (60/40 SnPb)

