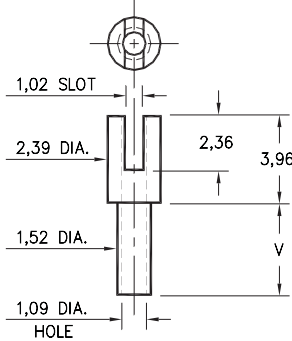
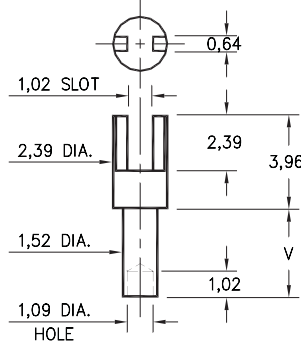


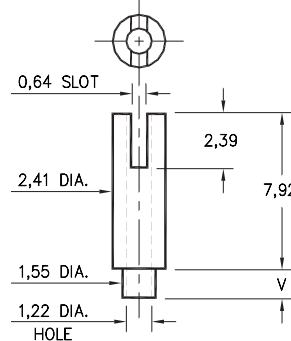
2303/2323/2322



2303-X-01-XX-00-00-07-0
Swage mount in 1,63 hole



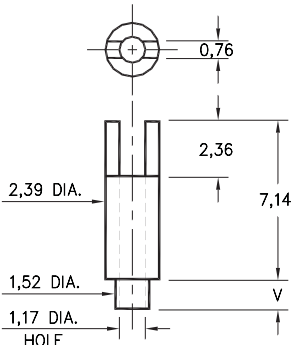
2323-X-01-XX-00-00-07-0
Swage mount in 1,63 hole



2322-X-01-XX-00-00-07-0
Swage mount in 1,63 hole

- X -	Board Thickness	Length V
1	0,79	1,35
2	1,57	2,13
3	2,39	2,92
4	3,18	3,73

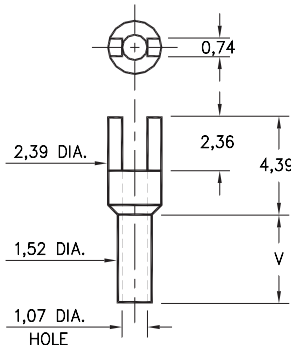
2320



2320-X-01-XX-00-00-07-0
Swage mount in 1,63 hole

- X -	Board Thickness	Length V
1	0,79	1,35
2	1,57	2,13
3	2,39	2,92

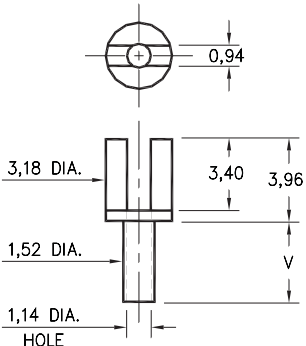
2328



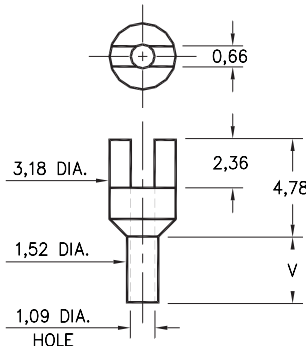
2328-X-01-XX-00-00-07-0
Swage mount in 1,63 hole

- X -	Board Thickness	Length V
1	0,79	1,57
2	1,57	2,39
3	2,39	3,18
4	3,18	3,96

2520/2517



2520-X-01-XX-00-00-07-0
Swage mount in 1,63 hole



2517-X-01-XX-00-00-07-0
Swage mount in 1,63 hole

- X -	Board Thickness	Length V
1	0,79	1,57
2	1,57	2,39
3	2,39	3,18
4	3,18	3,96

SPECIFICATIONS

PIN MATERIAL:
Brass Alloy 360, 1/2 Hard
Swage pins are annealed

DIMENSION IN INCHES
TOLERANCES ON:
LENGTHS: ±0,13
DIAMETERS: ±0,05
ANGLES: ± 2°

ORDER CODE: XXXX - X - 01 - XX - 00 - 00 - 07 - 0

BASIC PART #

SPECIFY PIN FINISH:

- 01 5,08µm TIN/LEAD OVER NICKEL
- ◇ 80 5,08µm TIN OVER NICKEL (RoHS)
- ◇ 44 7,62µm SILVER OVER COPPER (RoHS)
- ◇ 50 7,62µm ELECTRO-SOLDER (RoHS) (60/40 SnPb)

