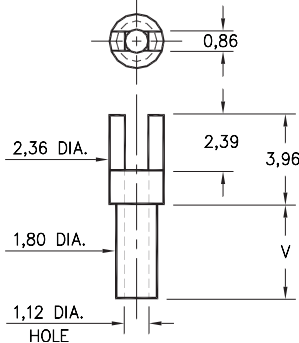


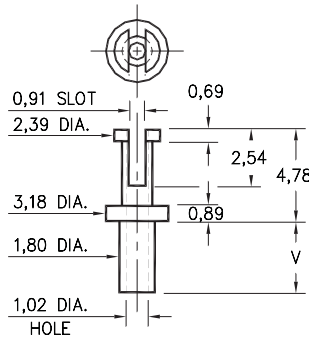
2314



2314-X-01-XX-00-00-07-0
Swage mount in 1,93 hole

- X -	Board Thickness	Length V
1	0,79	1,14
2	1,57	2,39
3	2,39	3,18
4	3,18	3,96

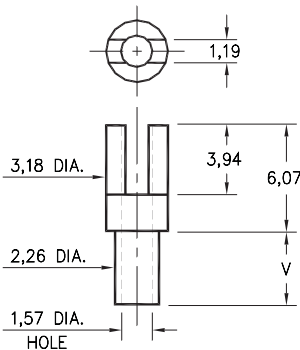
2511



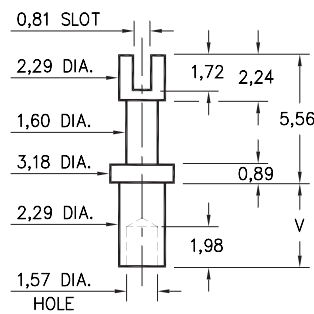
2511-X-01-XX-00-00-07-0
Swage mount in 1,93 hole

- X -	Board Thickness	Length V
1	0,79	1,60
2	1,57	2,39
3	2,39	3,18
4	3,18	3,96

2515/2516



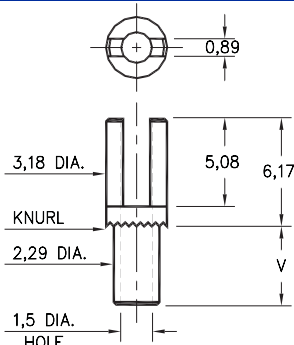
2515-X-01-XX-00-00-07-0
Swage mount in 2,39 hole



2516-X-01-XX-00-00-07-0
Swage mount in 2,39 hole

- X -	Board Thickness	Length V
1	0,79	1,91
2	1,57	2,67
3	2,39	3,43
4	3,18	3,73

2502



2502-X-01-XX-00-00-07-0
Swage mount in 2,39 hole

- X -	Board Thickness	Length V
1	0,79	2,03
2	1,57	2,82
3	2,39	3,63
4	3,18	4,42

SPECIFICATIONS

PIN MATERIAL:
Brass Alloy 360, 1/2 Hard
Swage pins are annealed

DIMENSION IN INCHES
TOLERANCES ON:
LENGTHS: $\pm 0,13$
DIAMETERS: $\pm 0,05$
ANGLES: $\pm 2^\circ$

ORDER CODE: XXXX - X - 01 - XX - 00 - 00 - 07 - 0

BASIC PART #

SPECIFY PIN FINISH:

- 01 5,08 μ m TIN/LEAD OVER NICKEL
- ◇ 80 5,08 μ m TIN OVER NICKEL (RoHS)
- ◇ 44 7,62 μ m SILVER OVER COPPER (RoHS)
- ◇ 50 7,62 μ m ELECTRO-SOLDER (RoHS)
(60/40 SnPb)

