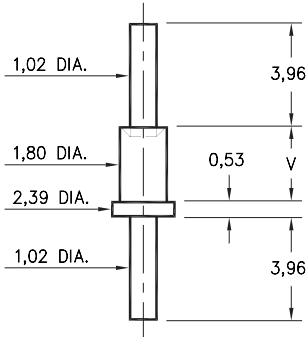


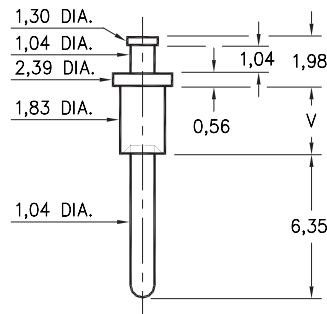
2319



- X -	Board Thickness	Length V
1	0,79	1,30
2	1,57	2,08
3	2,39	2,87

2319-X-00-XX-00-00-07-0
Swage mount in 1,93 hole

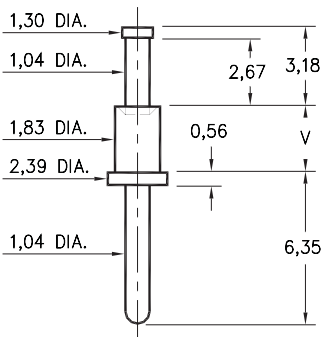
2313



- X -	Board Thickness	Length V
1	0,79	1,30
2	1,57	2,13
3	2,39	2,87
4	3,18	3,68

2313-X-00-XX-00-00-07-0
Swage mount in 1,93 hole

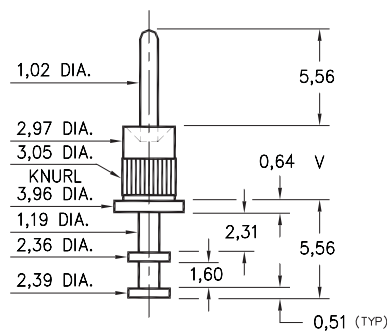
2321



- X -	Board Thickness	Length V
1	0,79	1,30
2	1,57	2,08
3	2,39	2,87
4	3,18	3,68

2321-X-00-XX-00-00-07-0
Swage mount in 1,93 hole

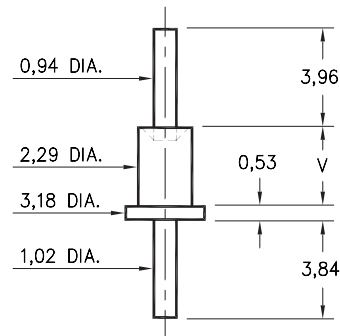
2706



- X -	Board Thickness	Length V
1	0,79	1,60
2	1,57	2,36
3	2,39	3,18
4	3,18	3,96

2706-X-00-XX-00-00-07-0
Swage mount in 3,05 hole

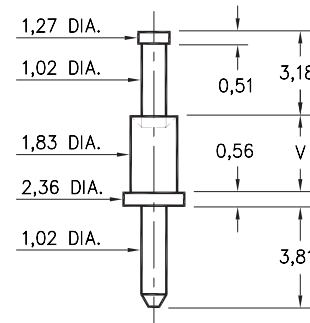
2530



- X -	Board Thickness	Length V
2	1,57	2,39
3	2,39	3,18
4	3,18	3,96

2530-X-00-XX-00-00-07-0
Swage mount in 2,39 hole

3156



- X -	Board Thickness	Length V
1	0,79	1,30
2	1,57	2,08
3	2,39	2,87
4	3,18	3,68

3156-X-00-XX-00-00-08-0
Swage mount in 1,93 hole

SPECIFICATIONS

PIN MATERIAL:
Brass Alloy 360, 1/2 Hard
Swage pins are annealed

**DIMENSION IN INCHES
TOLERANCES ON:**
LENGTHS: ±0,13
DIAMETERS: ±0,05
ANGLES: ± 2°

ORDER CODE: XXXX - X - 00 - XX - 00 - 00 - XX - 0

BASIC PART #

SPECIFY PIN FINISH:

- 01 5,08µm TIN/LEAD OVER NICKEL
- ◇ 80 5,08µm TIN OVER NICKEL (RoHS)
- ◇ 44 7,62µm SILVER OVER COPPER (RoHS)
- ◇ 50 7,62µm ELECTRO-SOLDER (RoHS) (60/40 SnPb)

