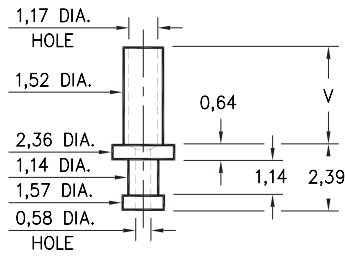


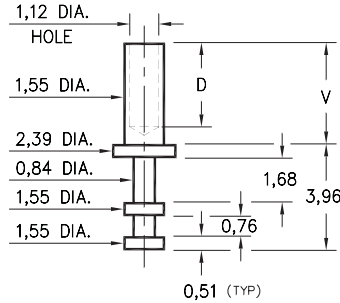
## 2312



- X -	Board Thickness	Length V
1	0,79	1,35
2	1,57	2,39
3	2,39	2,92
4	3,18	3,73

**2312-X-00-XX-00-00-07-0**  
Swage mount in 1,63 hole

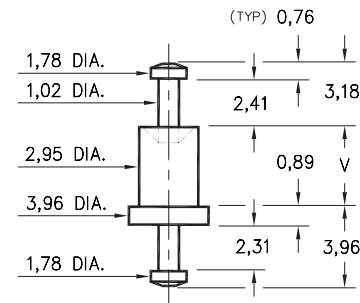
## 2308



- X -	Board Thickness	Length V	Depth D
1	0,79	1,37	0,91
2	1,57	2,13	1,68
3	2,39	2,92	2,44
4	3,18	3,73	3,20

**2308-X-00-XX-00-00-07-0**  
Swage in 1,63 mount hole

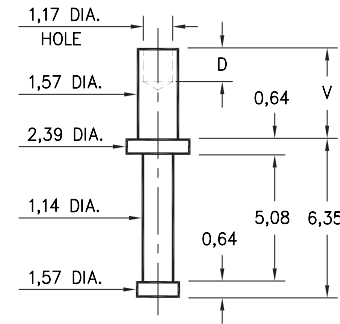
## 2707



- X -	Board Thickness	Length V
1	0,79	1,57
2	1,57	2,39
3	2,39	3,18
4	3,18	3,96

**2707-X-00-XX-00-00-07-0**  
Swage mount in 3,05 hole

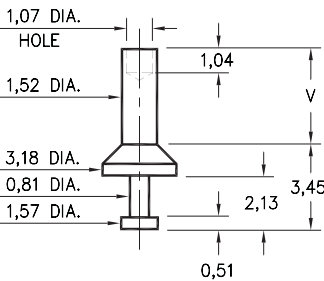
## 2329



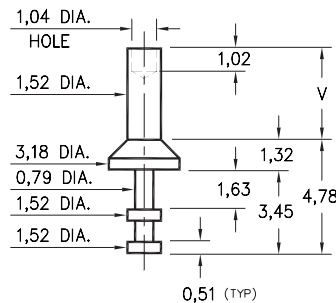
- X -	Board Thickness	Length V	Depth D
1	0,79	1,14	1,14
2	1,57	2,39	1,57
3	2,39	3,18	
4	3,18	3,96	

**2329-X-00-XX-00-00-07-0**  
Swage mount in 1,70 hole

## 2510/2513



**2510-X-00-XX-00-00-07-0**  
Swage mount in 1,63 hole



**2513-X-00-XX-00-00-07-0**  
Swage mount in 1,63 hole

- X -	Board Thickness	Length V
1	0,79	1,57
2	1,57	2,39
3	2,39	3,18
4	3,18	3,96

### SPECIFICATIONS

**PIN MATERIAL:**  
Brass Alloy 360, 1/2 Hard  
Swage pins are annealed

**DIMENSION IN INCHES**  
**TOLERANCES ON:**  
LENGTHS: ±0,13  
DIAMETERS: ±0,05  
ANGLES: ± 2°

**ORDER CODE: XXXX - X - 00 - XX - 00 - 00 - 07 - 0**

**BASIC PART #**

**SPECIFY PIN FINISH:**

- 01 5,08µm TIN/LEAD OVER NICKEL
- ◇ 80 5,08µm TIN OVER NICKEL (RoHS)
- ◇ 44 7,62µm SILVER OVER COPPER (RoHS)
- ◇ 50 7,62µm ELECTRO-SOLDER (RoHS) (60/40 SnPb)

