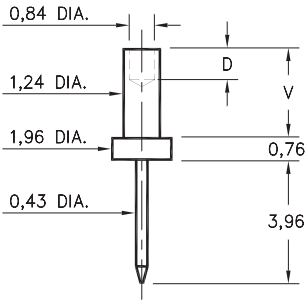


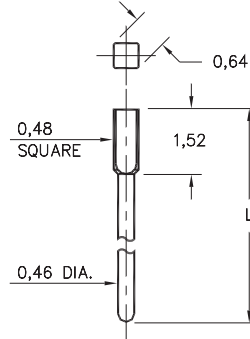
### 3116



Basic Part Number	Board Thickness	Length V	Length D
3116-1	0,79	1,30	0,89
3116-2	1,57	2,08	1,57
3116-3	2,39	2,87	1,57
3116-4	3,18	3,68	1,57

**3116-X-00-XX-00-00-08-0**  
Swage mount in 1,32 hole

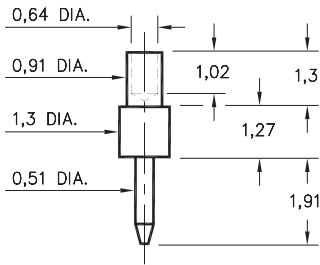
### 5435



Basic Part Number	Length L
5435-0	7,70
5435-1	5,08
5435-2	10,49

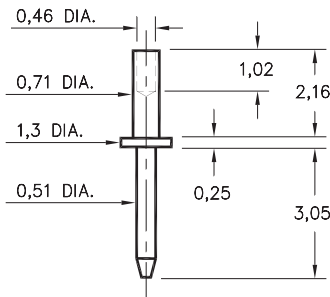
**5435-X-05-XX-00-00-03-0**  
Square press-fit in 0,56 plated thru hole

### 3135



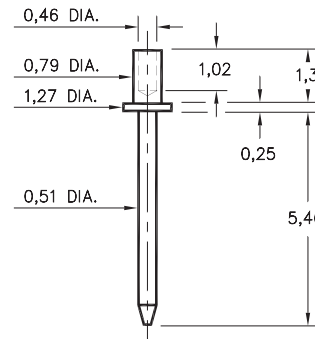
**3135-1-00-XX-00-00-08-0**  
Swage mount in 1,02 hole.  
For 0,79 thick board.

### 3210



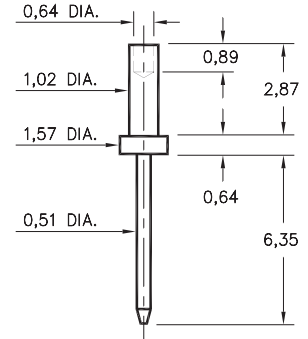
**3210-2-00-XX-00-00-08-0**  
Swage mount in 0,79 hole.  
For 1,57 thick board.

### 3129



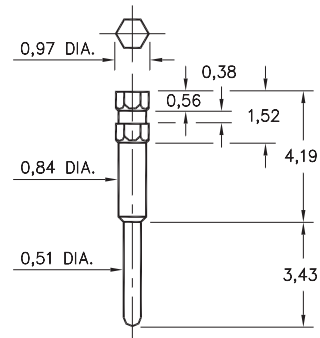
**3129-1-00-XX-00-00-08-0**  
Swage mount in 0,89 hole.  
For 0,79 thick board.

### 3147



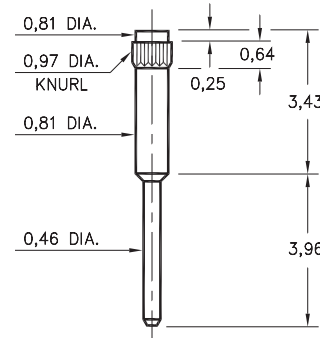
**3147-3-00-XX-00-00-08-0**  
Swage mount in 1,09 hole.  
For 2,39 thick board.

### 4366



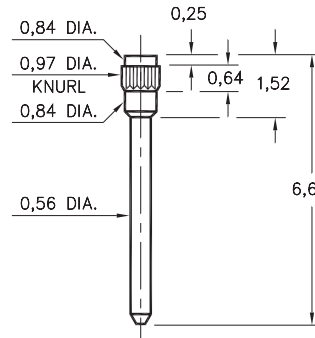
**4366-0-00-XX-00-00-03-0**  
Hex press-fit in 0,86 plated thru hole

### 1267



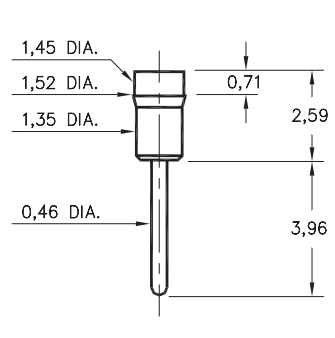
**1267-0-00-XX-00-00-03-0**  
Press-fit in 0,89 mounting hole

### 7827



**7827-0-00-XX-00-00-03-0**  
Press-fit in 0,89 mounting hole

### 1130



**1130-0-00-XX-00-00-03-0**  
Press-fit in 1,45 mounting hole  
Pin material is Ph Br. 544 (B2)

#### SPECIFICATIONS

**PIN MATERIAL:**  
Brass Alloy 360, 1/2 Hard  
(Except Swage pins which are annealed)

**DIMENSION IN INCHES**  
**TOLERANCES ON:**  
LENGTHS: ±0,13  
DIAMETERS: ±0,05  
ANGLES: ± 2°

**ORDER CODE: XXXX - X - 0X - XX - 00 - 00 - XX - 0**

**BASIC PART #**

**SPECIFY PIN FINISH:**

- 01 5,08µm TIN/LEAD OVER NICKEL
- ◇ 80 5,08µm TIN OVER NICKEL (RoHS)
- ◇ 15 0,25µm GOLD OVER NICKEL (RoHS)
- ◇ 21 0,51µm GOLD OVER NICKEL (RoHS)
- ◇ 34 1,27µm GOLD OVER NICKEL (RoHS)

