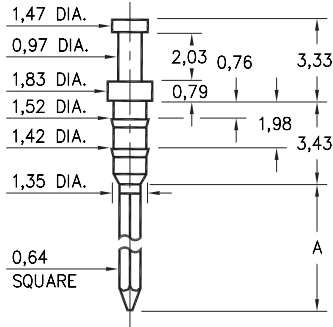


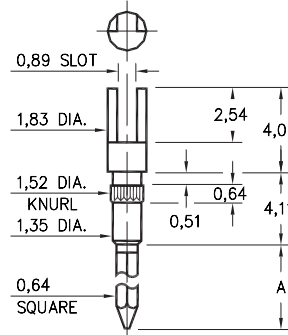
1096



Basic Part Number	# of Wraps	Wrapost Length A
1096-2	2	9,68
1096-3	3	13,39

1096-X-05-XX-00-00-01-0
Press-fit in 1,45 mounting hole

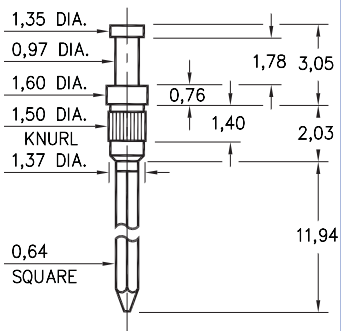
1106



Basic Part Number	# of Wraps	Wrapost Length A
1106-2	2	9,40
1106-3	3	12,95

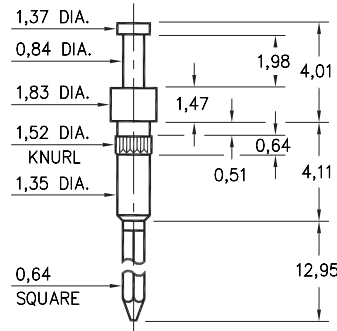
1106-X-23-XX-00-00-01-0
Press-fit in 1,45 mounting hole

1093



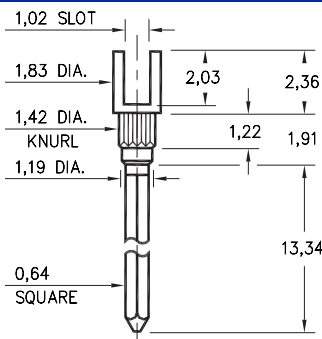
1093-0-05-XX-00-00-01-0
Press-fit in 1,42 mounting hole

0730



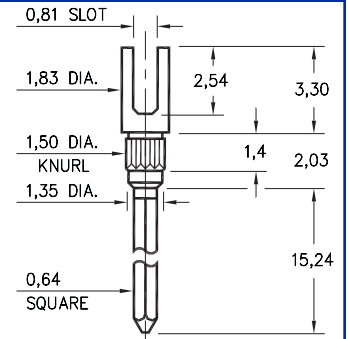
0730-3-05-XX-00-00-01-0
Press-fit in 1,45 mounting hole

1122



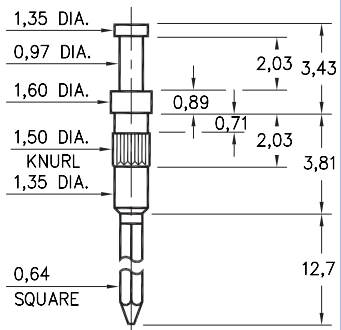
1122-0-22-XX-00-00-01-0
Press-fit in 1,35 mounting hole

1064



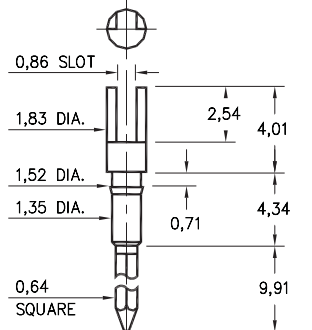
1064-0-23-XX-00-00-01-0
Press-fit in 1,42 mounting hole

1092



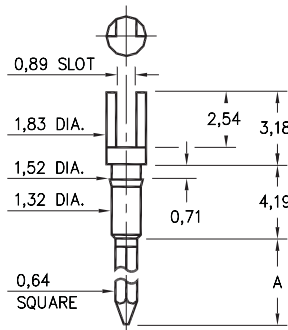
1092-0-05-XX-00-00-01-0
Press-fit in 1,42 mounting hole

1068



1068-0-23-XX-00-00-01-0
Press-fit in 1,45 mounting hole

1070 ⇒ 1072



107X-X-23-XX-00-00-01-0
Press-fit in 1,45 mounting hole

Basic Part Number	# of Wraps	Wrapost Length A
1072-1	1	6,60
1071-2	2	9,40
1070-3	3	12,95

SPECIFICATIONS

PIN MATERIAL:
Brass Alloy 360, 1/2 Hard

DIMENSION IN INCHES
TOLERANCES ON:
LENGTHS: ±0,13
DIAMETERS: ±0,05
ANGLES: ± 2°

ORDER CODE: XXXX - X - XX - XX - 00 - 00 - 01 - 0

BASIC PART #

SPECIFY PIN FINISH:

- 01 5,08µm TIN/LEAD OVER NICKEL
- ◇ 80 5,08µm TIN OVER NICKEL (RoHS)
- ◇ 15 0,25µm GOLD OVER NICKEL (RoHS)
- ◇ 21 0,51µm GOLD OVER NICKEL (RoHS)

