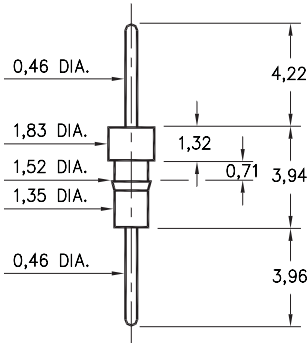


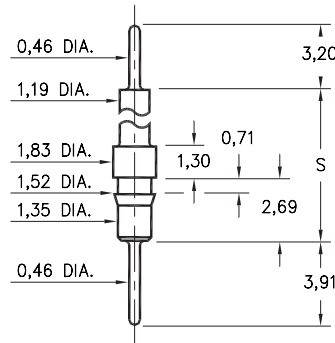
### 0504/0505



Basic Part Number	Pin Material
0504-0	Ph Br. 544
0505-0	Brass 360

**050X-0-00-XX-00-00-03-0**  
Press-fit in 1,45 mounting hole

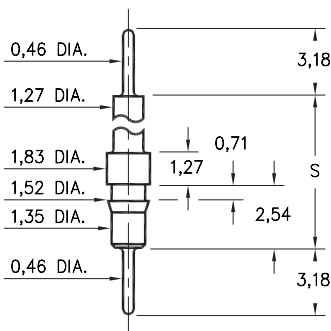
### 5510/5511



Basic Part Number	Standoff Height S
5510-0	8,41
5511-0	15,39

**551X-0-00-XX-00-00-03-0**  
Press-fit in 1,45 mounting hole

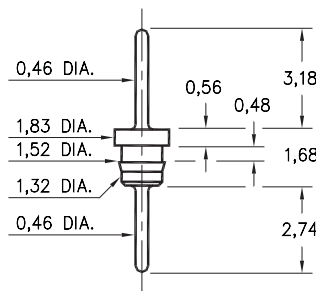
### 4259



Basic Part Number	Standoff Height S
4259-1	5,33
4259-2	8,51
4259-3	14,86
4259-4	21,21

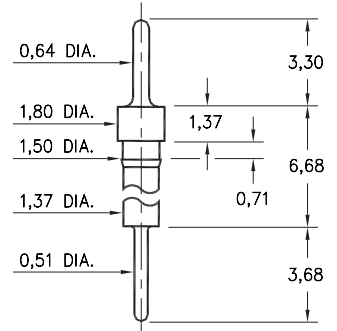
**4259-X-00-XX-00-00-03-0**  
Press-fit in 1,45 mounting hole

### 3516



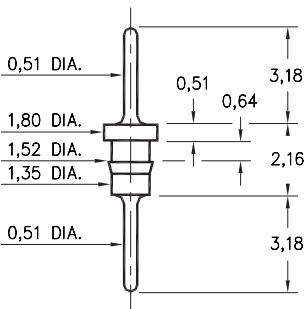
**3516-0-00-XX-00-00-03-0**  
Press-fit in 1,45 mounting hole

### 8859



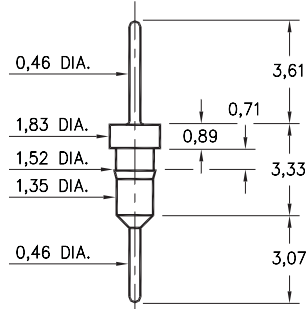
**8859-0-00-XX-00-00-03-0**  
Press-fit in 1,42 mounting hole

### 6585



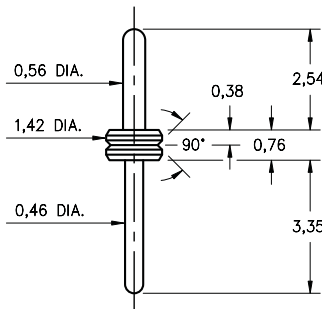
**6585-0-00-XX-00-00-03-0**  
Press-fit in 1,45 mounting hole  
Pin material is Ph Br 544 (B2)

### 3404



**3404-0-00-XX-00-00-03-0**  
Press-fit in 1,45 mounting hole

### 3169



**3169-0-00-15-00-00-03-0**  
V-Groove Header Pin  
Also available on Kapton Tape

#### SPECIFICATIONS

**PIN MATERIAL:**  
Brass Alloy 360, 1/2 Hard  
(Except where noted)

**DIMENSION IN INCHES**  
**TOLERANCES ON:**  
LENGTHS:  $\pm 0,13$   
DIAMETERS:  $\pm 0,05$   
ANGLES:  $\pm 2^\circ$

**ORDER CODE: XXXX - X - 00 - XX - 00 - 00 - 03 - 0**

**BASIC PART #**

**SPECIFY PIN FINISH:**

- 01 5,08 $\mu$ m TIN/LEAD OVER NICKEL
- ◇ 80 5,08 $\mu$ m TIN OVER NICKEL (RoHS)
- ◇ 15 0,25 $\mu$ m GOLD OVER NICKEL (RoHS)
- ◇ 21 0,51 $\mu$ m GOLD OVER NICKEL (RoHS)
- ◇ 34 1,27 $\mu$ m GOLD OVER NICKEL (RoHS)

