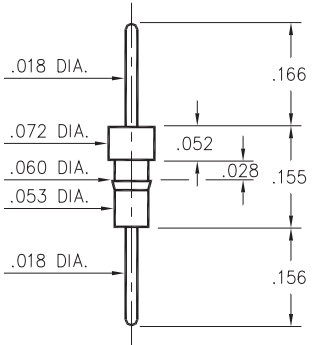


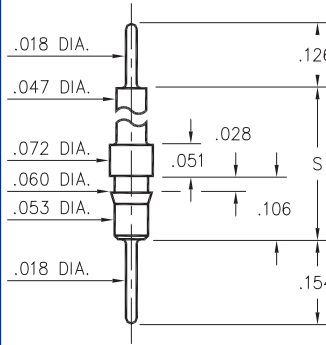
### 0504/0505



Basic Part Number	Pin Material
0504-0	Ph Br. 544
0505-0	Brass 360

**050X-0-00-XX-00-00-03-0**  
Press-fit in .057 mounting hole

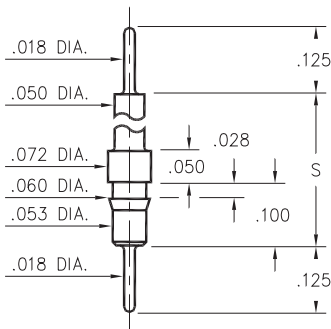
### 5510/5511



Basic Part Number	Standoff Height S
5510-0	.331
5511-0	.606

**551X-0-00-XX-00-00-03-0**  
Press-fit in .057 mounting hole

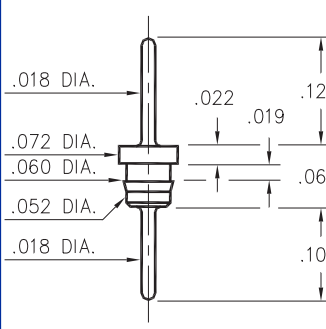
### 4259



Basic Part Number	Standoff Height S
4259-1	.210
4259-2	.335
4259-3	.585
4259-4	.835

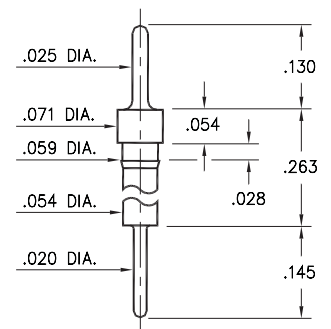
**4259-X-00-XX-00-00-03-0**  
Press-fit in .057 mounting hole

### 3516



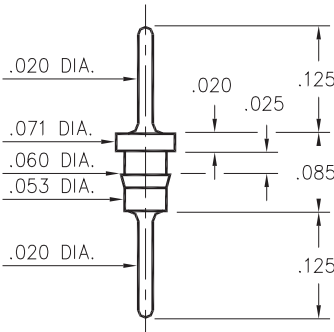
**3516-0-00-XX-00-00-03-0**  
Press-fit in .057 mounting hole

### 8859



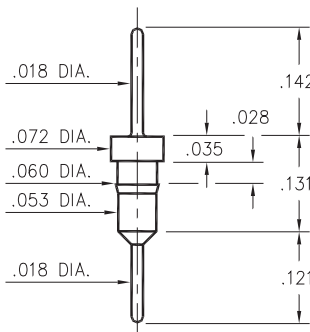
**8859-0-00-XX-00-00-03-0**  
Press-fit in .056 mounting hole

### 6585



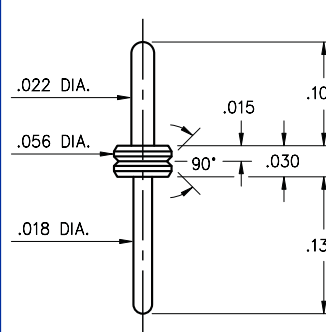
**6585-0-00-XX-00-00-03-0**  
Press-fit in .057 mounting hole  
Pin material is Ph Br 544 (B2)

### 3404



**3404-0-00-XX-00-00-03-0**  
Press-fit in .057 mounting hole

### 3169



**3169-0-00-15-00-00-03-0**  
V-Groove Header Pin  
Also available on Kapton Tape

#### SPECIFICATIONS

**PIN MATERIAL:**  
Brass Alloy 360, 1/2 Hard  
(Except where noted)

**DIMENSION IN INCHES**  
**TOLERANCES ON:**  
LENGTHS: ±.005  
DIAMETERS: ±.002  
ANGLES: ± 2°

**ORDER CODE: XXXX - X - 00 - XX - 00 - 00 - 03 - 0**

**BASIC PART #**

**SPECIFY PIN FINISH:**

- 01 200µ" TIN/LEAD OVER NICKEL
- ◇ 80 200µ" TIN OVER NICKEL (RoHS)
- ◇ 15 10µ" GOLD OVER NICKEL (RoHS)
- ◇ 21 20µ" GOLD OVER NICKEL (RoHS)
- ◇ 34 50µ" GOLD OVER NICKEL (RoHS)

