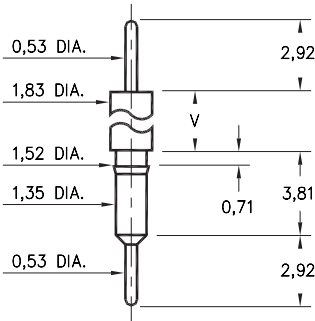


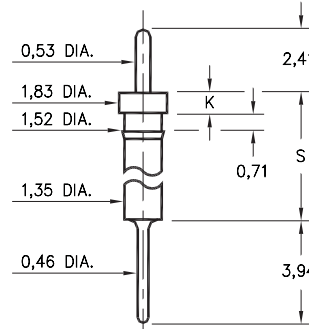
3406



Basic Part Number	Shoulder Height V
3406-0	8,89

340X-0-00-XX-00-00-03-0
Press-fit in 1,45 mounting hole

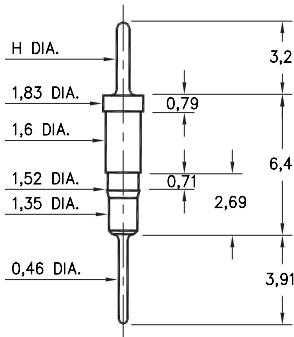
0315



Basic Part Number	Head Height K	Stand-off Height S
0315-0	0,76	4,83
0315-1	1,02	10,92

0315-X-00-XX-00-00-03-0
Press-fit in 1,45 mounting hole
Pin material is Ph Br 544 (B2)

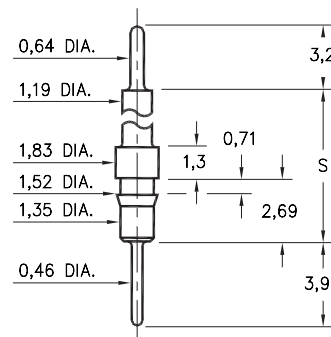
5503/5509



Basic Part Number	Pin Diameter H
5503-0	0,64
5509-0	0,46

550X-0-00-XX-00-00-03-0
Press-fit in 1,45 mounting hole

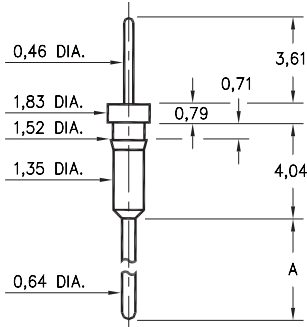
5504/5505



Basic Part Number	Standoff Height S
5504-0	8,41
5505-0	15,39

550X-0-00-XX-00-00-03-0
Press-fit in 1,45 mounting hole

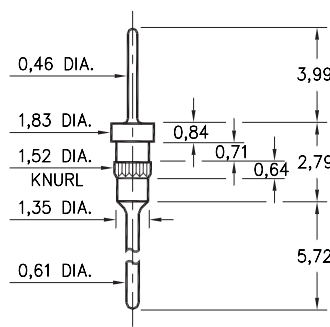
3409



Basic Part Number	Pin Length A
3409-1	5,33
3409-2	10,67

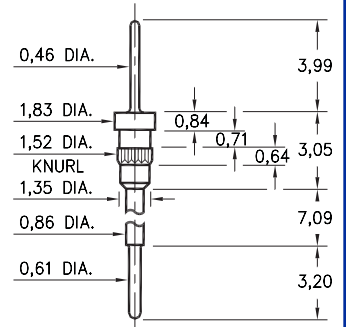
3409-X-00-XX-00-00-03-0
Press-fit in 1,45 mounting hole

5011



5011-0-00-XX-00-00-03-0
Press-fit in 1,45 mounting hole

5113



5113-0-00-XX-00-00-03-0
Press-fit in 1,45 mounting hole

SPECIFICATIONS

PIN MATERIAL:
Brass Alloy 360, 1/2 Hard
(Except where noted)

DIMENSION IN INCHES
TOLERANCES ON:
LENGTHS: ±0,13
DIAMETERS: ±0,05
ANGLES: ± 2°



ORDER CODE: XXXX - X - 00 - XX - 00 - 00 - 03 - 0

BASIC PART #

SPECIFY PIN FINISH:

- 01 5,08µm TIN/LEAD OVER NICKEL
- ◇ 80 5,08µm TIN OVER NICKEL (RoHS)
- ◇ 15 0,25µm GOLD OVER NICKEL (RoHS)
- ◇ 21 0,51µm GOLD OVER NICKEL (RoHS)
- ◇ 34 1,27µm GOLD OVER NICKEL (RoHS)