

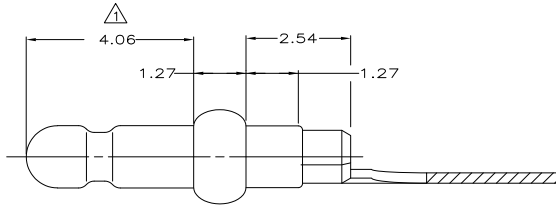
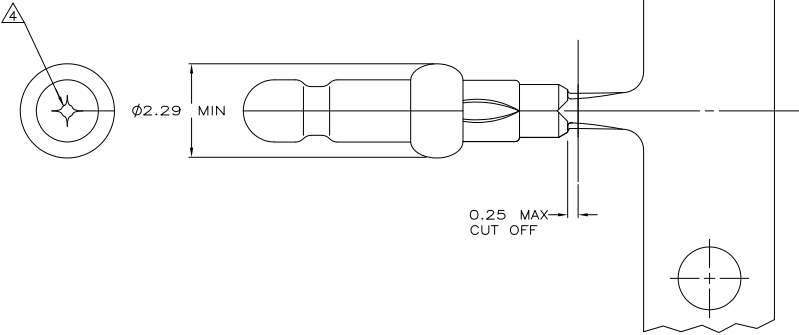
4

3

2

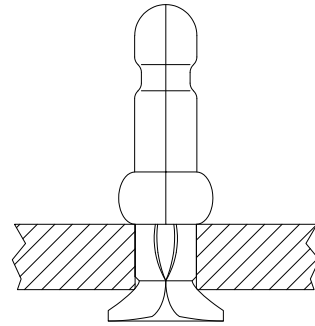
1

THIS DRAWING IS UNPUBLISHED. RELEASED FOR PUBLICATION
 © COPYRIGHT BY TYCO ELECTRONICS CORPORATION. ALL RIGHTS RESERVED.



LOC	DIST	REVISIONS		
F	LNK	DESCRIPTION	DATE	BY
Z		REVISED PER ECO-095-010625	18MAY06	KW JE
Z1		REVISED PER ECO-09-020932	07SEP09	KK AEG

- 1. 0.00076 MIN GOLD PLATING IN THIS AREA WITH 0.00381 MIN MATTE TIN LEAD ON THE REMAINDER, BOTH OVER 0.00127 MIN NICKEL UNDERPLATE.
- 2. FITS 1.40 - 1.55 DIAMETER HOLE IN A 1.59 PRINTED CIRCUIT BOARD.
- 3. PARTS TO COMPLY WITH AMP SOLDERABILITY SPECIFICATION 109-11-3.
- 4. 0.05 - 0.25 DIAMETER OPENING REQUIRED IN TIP OF PIN.
- 5. APPLICATOR FEED: 8.00 - 8.26
- 6. 0.00076 MIN GOLD PLATING IN THIS AREA WITH 0.00381 MIN MATTE TIN ON THE REMAINDER, BOTH OVER 0.00127 MIN NICKEL UNDERPLATE.
- 7. OBSOLETE PARTS: OBSOLETE CIS STREAMLINING PER D.RENAUD/D.SINISI



△	3-60973-2
△	60973-3
△	60973-2
△	60973-1
△	PART NUMBER

0.13	.005	1.55	.061	8.00	.315	-	-
0.05	.002	1.47	.058	4.06	.160	-	-
0.00381	0.00150	1.40	.055	2.54	.100	-	-
0.00127	0.00050	1.27	.050	2.29	.090	-	-
0.00076	0.00030	0.25	.010	1.59	.063	8.26	.325
MM	IN	MM	IN	MM	IN	MM	IN

CONVERSION TABLE



THIS DRAWING IS A CONTROLLED DOCUMENT.		DRW	T. BECK	8-21-97	Tyco Electronics Corporation Harrisburg, PA 17105-3608
DIMENSIONS: mm		CHK	R. SWING	8-21-97	
TOLERANCES UNLESS OTHERWISE SPECIFIED:		APP'D	A. BRIDGICK	9-10-97	PIN, .058 DIAMETER, PHOSPHOR BRONZE, CLINCH FIT, LOOSE PIECE, P.C. CONTACT
0. PLG ± .01		PRODUCT SPEC	108-1025	SIZE	
1. PLG ± .01		APPLICATION SPEC	114-1008	ONE CODE (DRAWING NO)	
2. PLG ± .015		WEIGHT	-	RESTRICTED TO	
3. PLG ± .01		MATERIAL	0.25 PH BRZ	SEE TABLE	A2 00779 C=60973
4. PLG ± .01		FINISH	-	CUSTOMER DRAWING	SCALE 15:1 SHEET 1 of 1 REV Z1