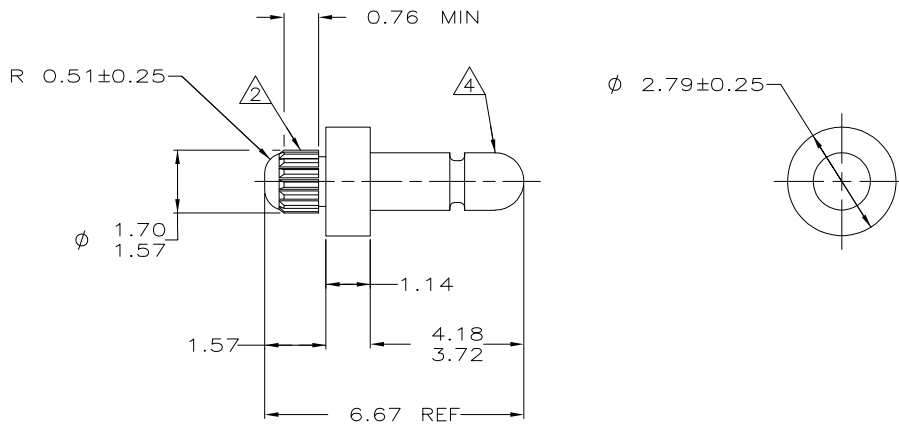


THIS DRAWING IS UNPUBLISHED. RELEASED FOR PUBLICATION
COPYRIGHT BY TYCO ELECTRONICS CORPORATION. ALL RIGHTS RESERVED.

LOC	DIST	REVISIONS				
CM	0	P	LTR	DESCRIPTION	DATE	DWN
		H		REVISED PER ECO-06-010625	18MAY06	KW

- 1 0.00381 MIN BRIGHT TIN LEAD PLATING ALL OVER.
- 2 REED STRAIGHT TOOTH KNURL CS 80-80 T.P.I., 125 TEETH, 70° INCLUDED ANGLE. FITS 1.50 - 1.57 DIAMETER HOLE IN A 0.79 PRINTED CIRCUIT BOARD.
- 3 PARTS TO COMPLY WITH AMP SOLDERABILITY SPECIFICATION 109-11-3.
- 4 MATES WITH AMP PARTS 60354, 60598 OR 60804.
- 5 0.00381 MIN BRIGHT TIN PLATING ALL OVER.



—	—
6.67	.263
4.18	.165
3.72	.146
2.79	.110
1.70	.067
1.57	.062
1.50	.059
1.47	.058
1.14	.045
0.79	.031
0.76	.030
0.51	.020
0.25	.010
0.13	.005
0.00381	.000150
MM	IN
CONVERSION TABLE	

METRIC

5	3-60839-1
1	60839-1
FINISH	PART NUMBER

THIS DRAWING IS A CONTROLLED DOCUMENT.		DWN T. BECK 8-15-97	Tyco Electronics Corporation Harrisburg, PA 17105-3608	
DIMENSIONS: mm		CHK R. SWING 8-15-97	NAME	
TOLERANCES UNLESS OTHERWISE SPECIFIED:		APVD A. BEDDICK 9-10-97	PIN, .058 DIAMETER, BRASS, KNURLED, P.C. CONTACT	
0 PLC ± -		PRODUCT SPEC	SIZE	
1 PLC ± -		108-1025	CAGE CODE	
2 PLC ± 0.13		APPLICATION SPEC	DRAWING NO	
3 PLC ± -		114-1008	RESTRICTED TO	
4 PLC ± -		WEIGHT	A.300779C-60839	
ANGLES ± -		CUSTOMER DRAWING	SCALE 10:1 SHEET 1 OF 1 REV H	
MATERIAL BRASS		FINISH SEE TABLE		